

IJRAR.ORG

E-ISSN: 2348-1269, P-ISSN: 2349-5138



**INTERNATIONAL JOURNAL OF RESEARCH AND
ANALYTICAL REVIEWS (IJRAR) | IJRAR.ORG**
An International Open Access, Peer-reviewed, Refereed Journal

PROGRAM MANAGEMENT IN AEROSPACE INDUSTRY

D.SURESH¹, A.SIVAKUMAR², R.ARIVAZHAGAN³, V.RAMAKRISHNAN⁴, R.ALEXANDER⁵

1,3,4,5- ASSISTANT PROFESSOR, DEPARTMENT OF MECHANICAL ENGINEERING,
ROEVER ENGINEERING COLLEGE, PERAMBALUR

2- ASSOCIATE PROFESSOR, DEPARTMENT OF MECHANICAL ENGINEERING, KONGUENGINEERING
COLLEGE, PERUNDURAI

ABSTRACT

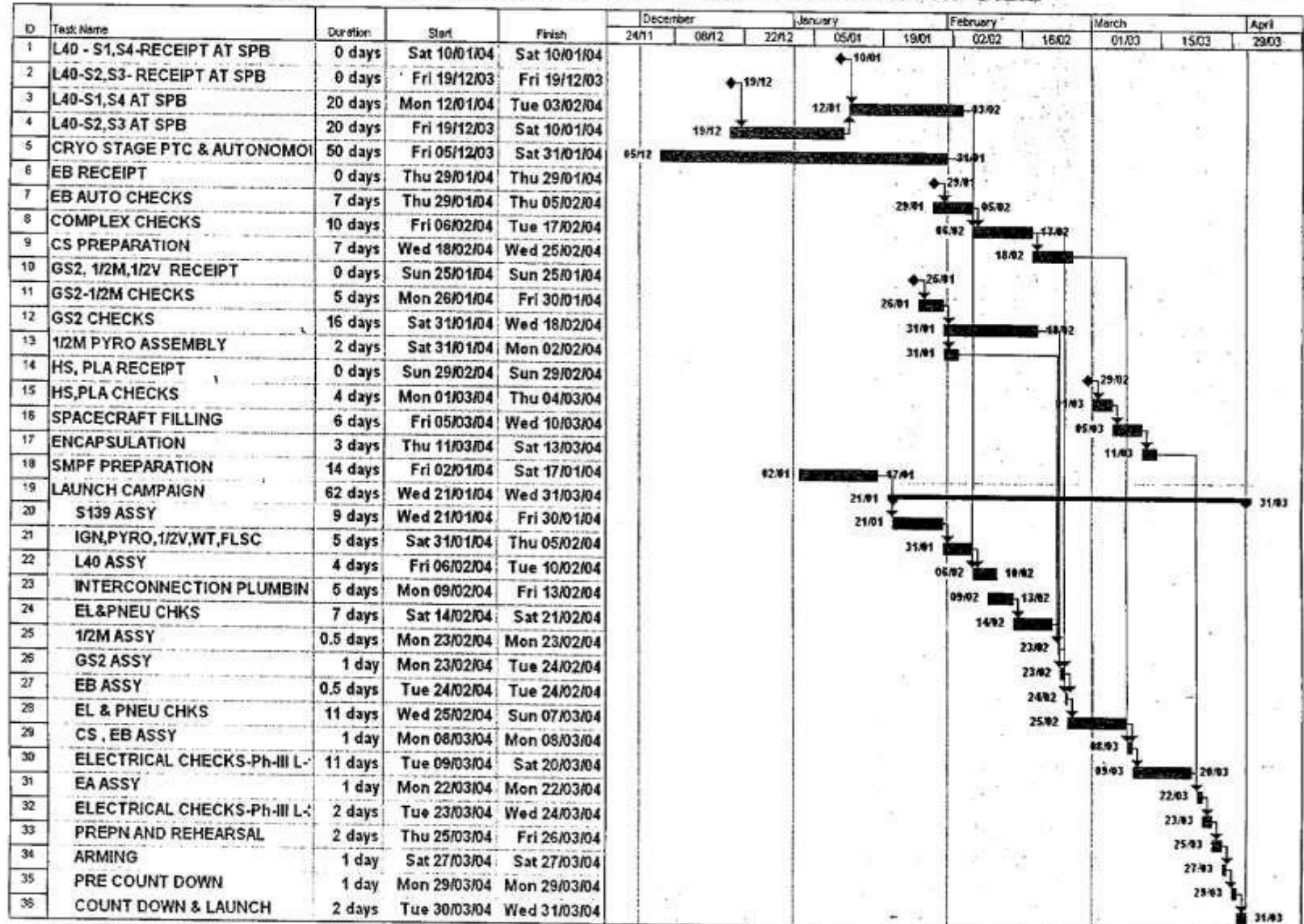
This paper describes Program Management activities in an aerospace industry is consolidated in the form of a document which happened during operational phase of a project.

Proposal for workflow of Program management is also represented in this paper.

Key words: Program managemen

**INDUSTRIAL ENGINEERING
APPLICATION AT ISRO**

GSLV-F01 LAUNCH OPERATIONS SCHEDULE

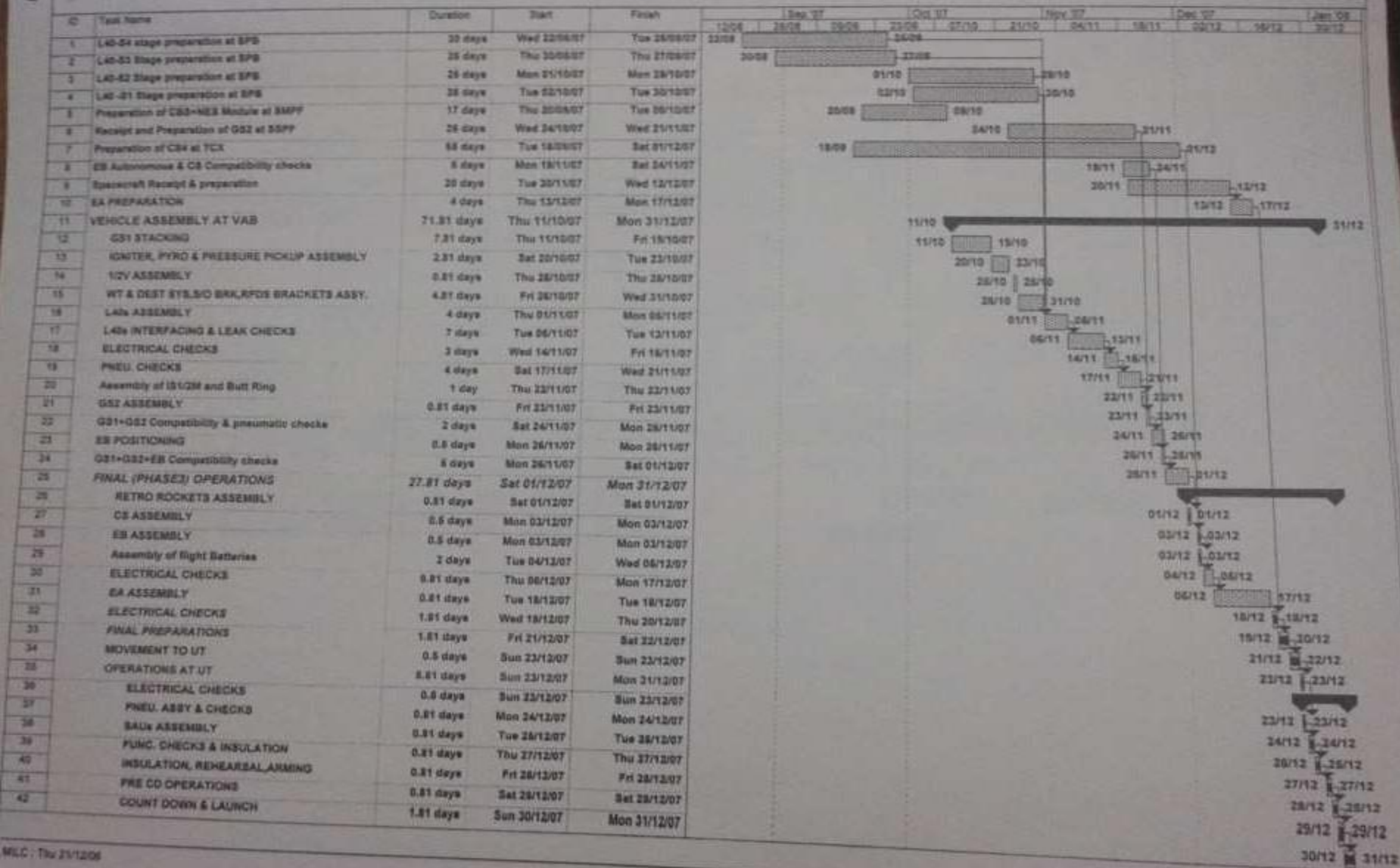


GSLV/MILC/2003

29/8/03

SLP MAIDEN LAUNCH -GSLV F02; PRESENTED FOR GSLV D3

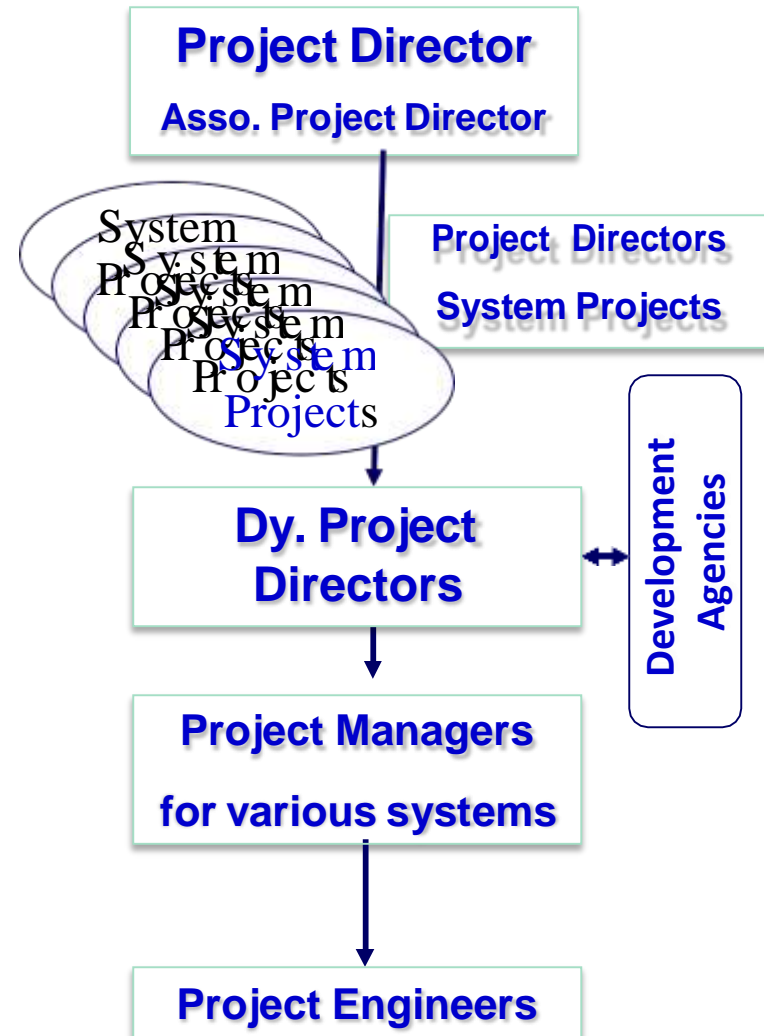
LAUNCH CAMPAIGN SCHEDULE FOR GSLV-D3 BY END DECEMBER 2007



**Management Structure
(For Launch Vehicle Programmes)**

- A Core Project team with overall responsibility
- System Projects in new / critical areas
- Distributed work environment (work centers all over India)
- New technology development at ISRO units
- Large scale facility build-up
 - Launch complex, Propulsion systems development, testing, Avionics systems and Vehicle level testing & mock ups etc.
- Large scale industrial production
 - Motor cases, Light alloy structures & Propellant tanks Liquid / Cryo engine systems, Avionics system components, Propellants & chemicals, Sub assemblies integration etc.
- Implementation of change & configuration control

Matrix Management Structure



Core Project Responsibilities

Responsibilities of the Core Project have been :

- ❖ **Definition and implementation of project management plan & procedures.**
- ❖ **Communication of project objectives and plans to all levels**
- ❖ **Mission specification & interfaces with users.**
- ❖ **Launch complex and tracking network interfaces.**
- ❖ **Vehicle systems definition and specifications.**
- ❖ **Stage engineering and interfaces control.**
- ❖ **Vehicle / stage level configuration control & change management**
- ❖ **Direct monitoring of progress in all key areas**
- ❖ **Speedy execution without compromising performance and quality**
- ❖ **Programme management, cost/schedule monitoring and control.**
- ❖ **Organise project related reviews at micro and macro levels**

Programme Control Cycle
Used in Development

Establishing Targets

Monitoring Performance

- **Generated programme plans, system development plans, schedules & milestone plans.**

- **Monitored through weekly biweekly and monthly review meetings, progress reports.**

**Programme
Analysis**

- **Compared actual progress with expected performance.**

Management Reporting

- **Identified solution options, implemented decisions & followup of needed actions.**

Techno-Managerial Review Mechanisms

Management of Scope, Time & Cost without compromising Quality

 Project Review Meetings

- Weekly review of project activity status

 Project Executive Reviews (PEX) : Tier - 1

- Monthly reviews for resolving technical / managerial issues

 Reviews by Centre Director

- Technical / managerial

 Reviews by Project Management Boards (PMB) : Tier - 2

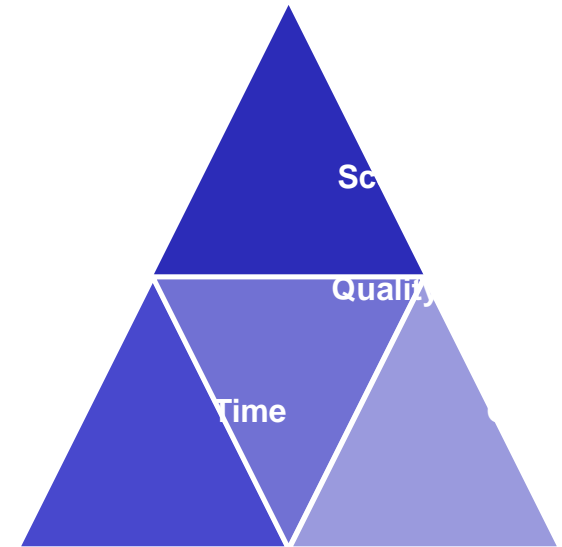
- General guidelines, budget approvals, schedules, facility & manpower

 Reviews by Project Management Council (PMC) : Tier - 3

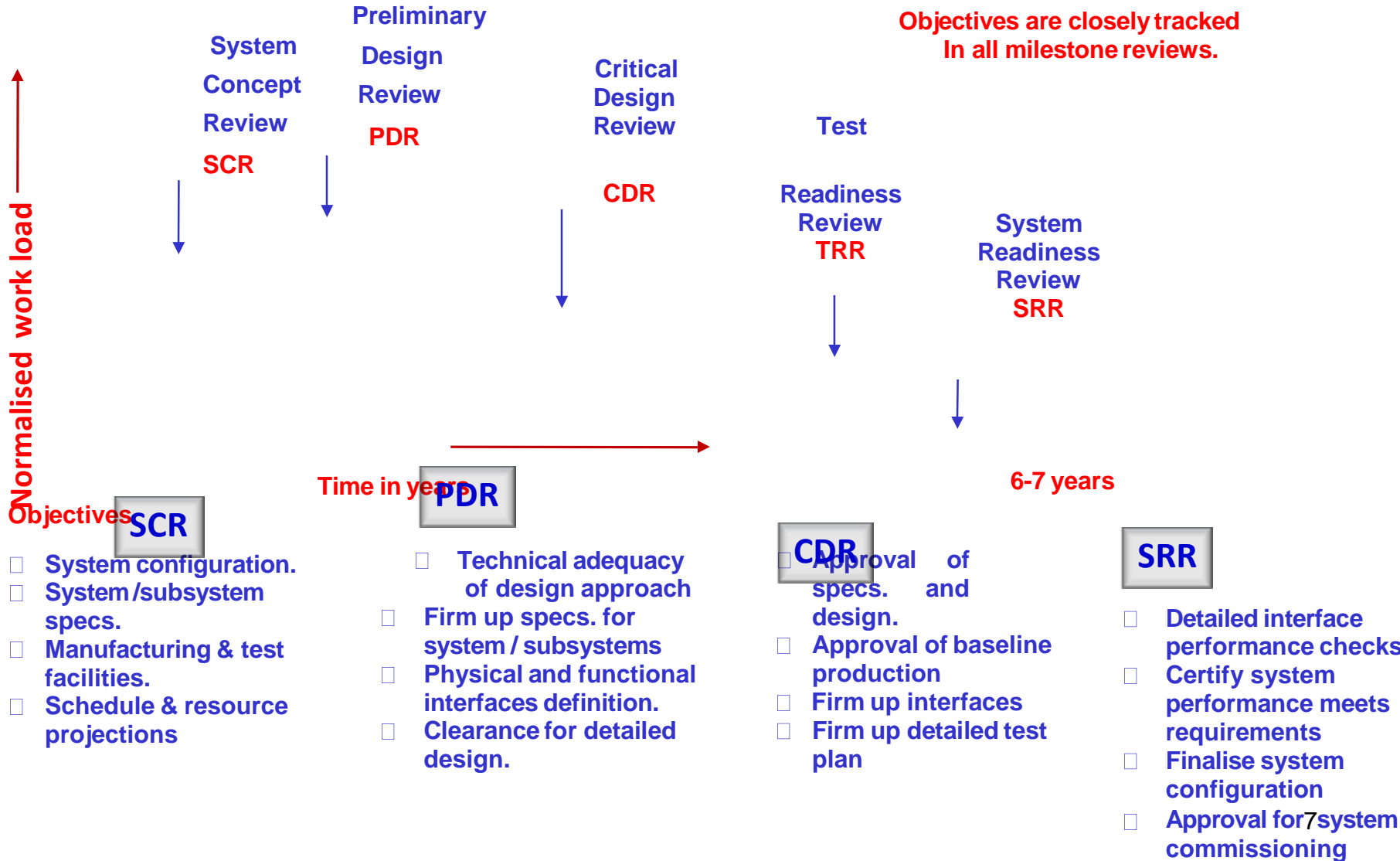
- Overall policy guidelines

 Reviews by Chairman, ISRO

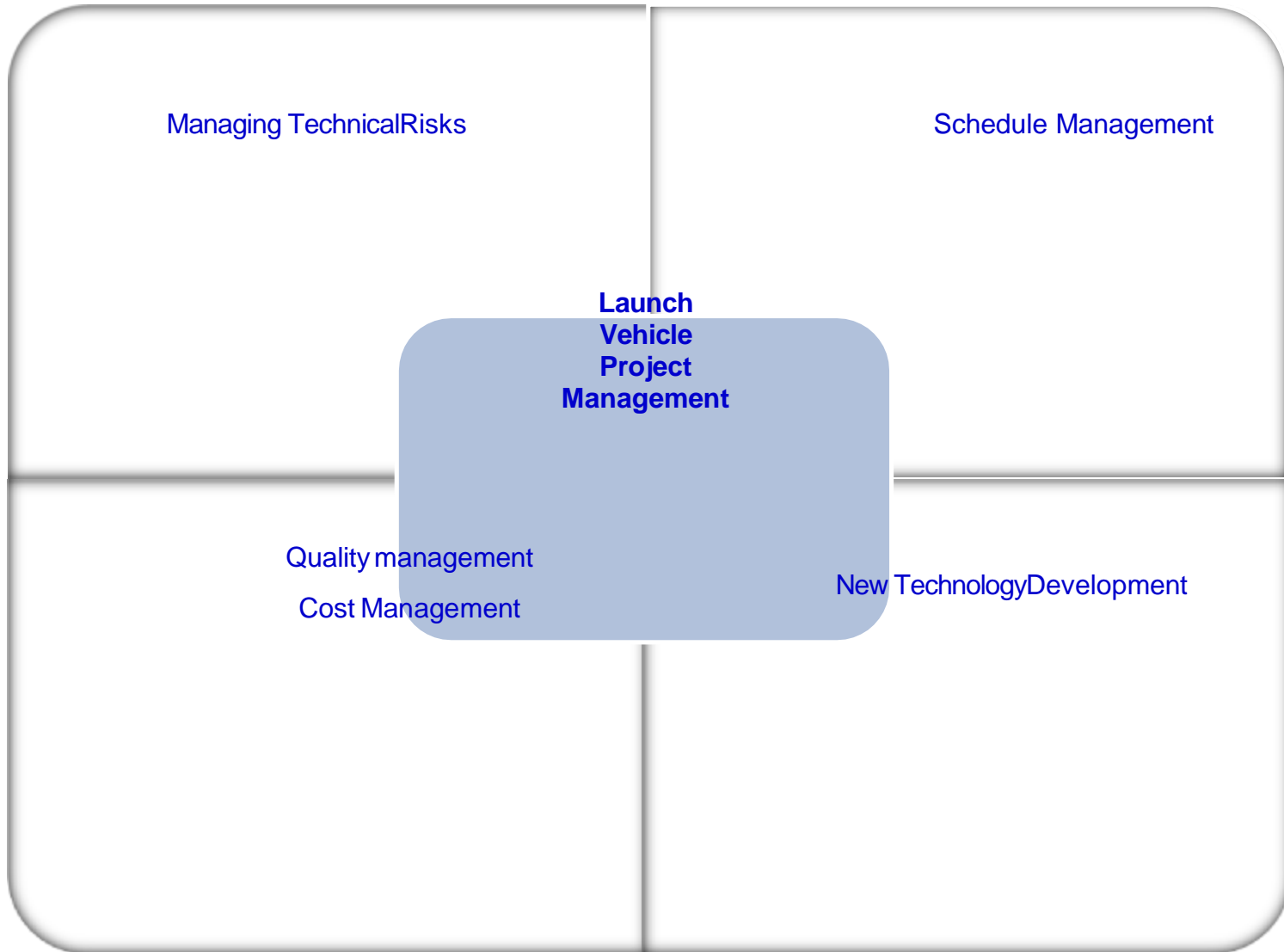
- Technical / managerial



Technical Review Milestones followed



Overall Management Approach



Managing Technical Risks

The following procedures are strictly implemented.

- Identification of single point failure
- Redundancy management for mission critical Avionics / Control systems
- Vendor directory /Preferred part list
- Well evolved part screening for electronic components
- Process documents & QA / QC plans
- Test & evaluation at different levels
- Integrated system level checks
- Detailed simulations at different levels
- FMECA analysis /Fault tree analysis

Project Schedule Management

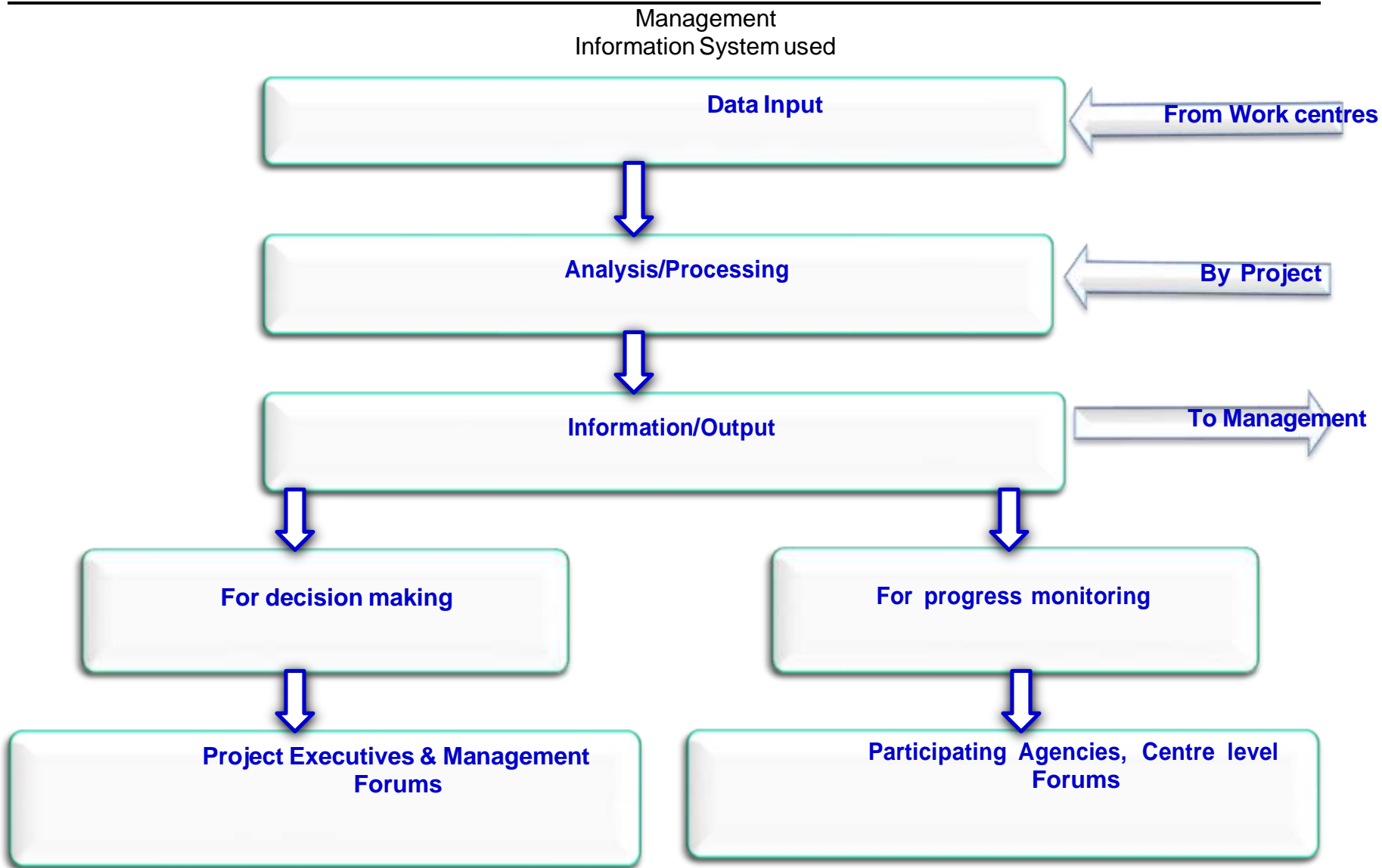
Optimal sharing of resources between numerous operational

and development p

The following methodologies are strictly implemented throughout the Project phase

Time management

- Work Break down Structures (WBS)
- Schedule analysis (PERT/CPM) & simulations
- Identifying 'limiting factors'
- Anticipating criticalities
- 'Feed forward' control– Real time correction of plans as work progresses, Work around plans
- Fast tracking through Concurrent Engineering approach
- Near critical paths & criticality index
- Integrated Information network for faster communication



Quality Management

- **Key processes and continuous Quality control during development and realisation of all launch vehicle subsystems are identified and carried out.**
- **The Strict Quality Assurance is ensured by meticulously following the various steps given below.**
 - **Approved specifications & design**
 - **Qualified materials, Process reviews**
 - **Inspection/Surveillance during production**
 - **Stage clearances**
 - **3 tier non conformance management**
 - **Batch testing for VOQ, Acceptance testing**
- **The Quality Audit is given utmost importance**
 - **Using appropriate equipments**
 - **Reference Standards**
 - **Monitoring of key characteristics**
 - **Maintenance of records & traceability**
 - **Verification through audits**



Change Management

- **Control of intersystem interfaces has been the major responsibility of the project team.**
- **The evolution and changes in the design are continuously monitored and the impacts assessed.**
- **Traceability of changes, decisions and inputs are utilised to assess the impacts of a new change.**
- **Design changes and requirements are closely monitored during development and changes are meticulously catalogued.**
- **Dissemination of the information across the system teams are done expeditiously using management information tools.**
- **Management of changes is given high priority to ensure the success of operational launches.**

Launch Campaign Management

Integrated Team Effort

- Launch vehicle
- Space craft
- Propellant servicing / Safety
- Tracking & ground station
- Logistics

Campaign management system

- Mission Director
- Vehicle Director
- Satellite Director
- Range Director

Planning methodology

- Micro level scheduling on day to day & hourly basis
- Orchestrated effort for resource deployment

Reviews

- More than 100 people involved per launch at different phases of time
- Technical /progress reviews
- Stage clearances
- Authorization reviews for launch
Mission Readiness Review, Launch Authorization Board



Countdown

45 to 60 days activity at Sriharikota

Conclusions. (Success through Team effort)

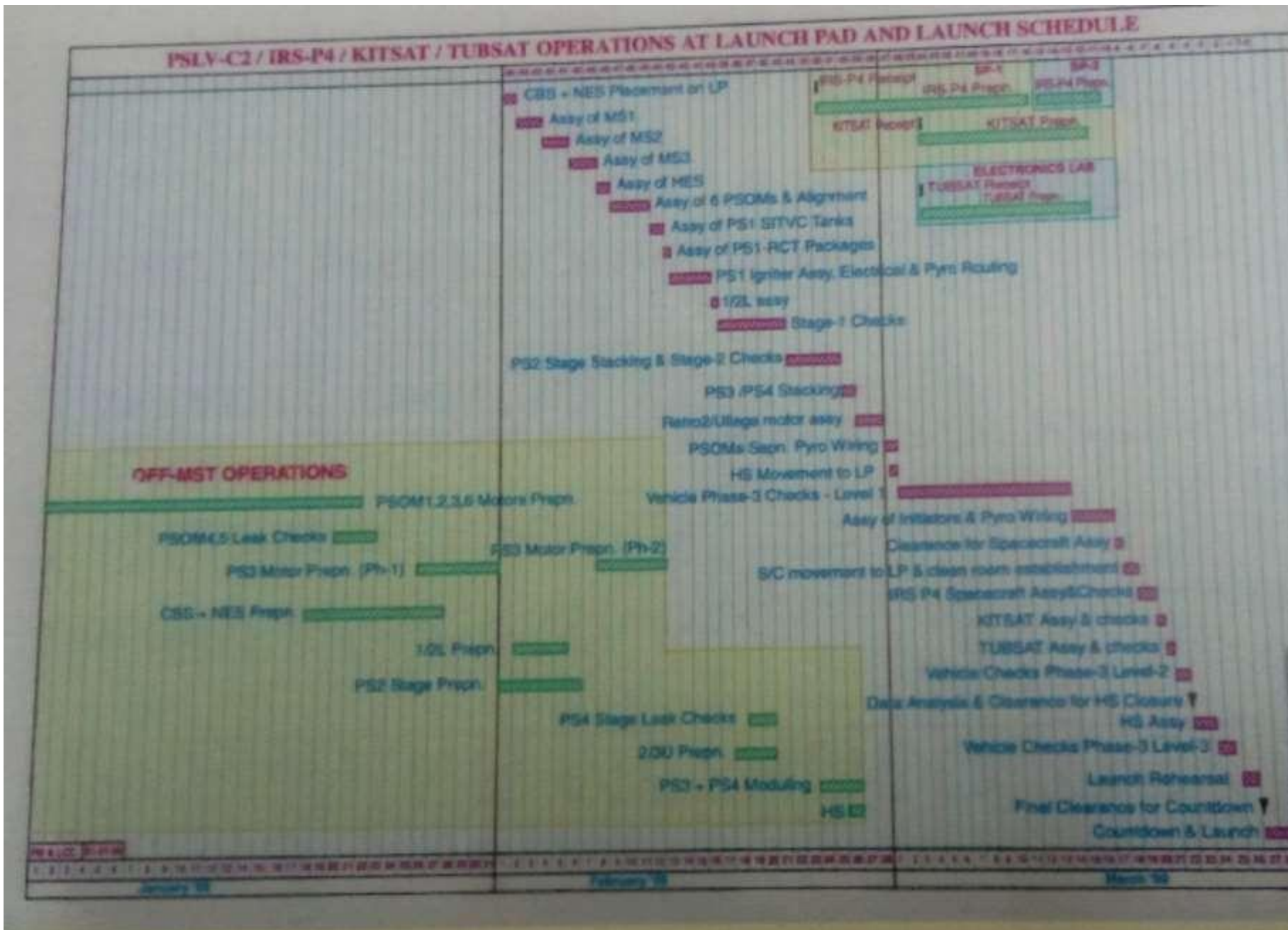
- **The Management Structure which is in vogue has been very effective .**
- **The Programme Control Cycle and the Overall Management approach have been very efficient , leading to successful space launches.**
- **Indian Space is able to implement programmes with shoe string budget through effective Schedule and Cost controls.**
- **Focus has always been on achievement of collective results.**
- **Time tested review mechanisms have helped to achieve technical excellence.**
- **Some of the key factors for the effective management of Indian Space Programme are:**
 - **Engaging the teams into productive, constructive discussions around ideas and issues**
 - **Accepting and committing to decisions & plan of actions arrived at by the team.**
 - **Each identified team member is accountable for delivery as per the decided plans.**
 - **Creative leadership, rewards and recognitions to the deserving team member/s who make significant contributions.**

Key aspects to success of ISRO LV projects

- THIRD PARTY SURVEILLANCE REPORTING
- REVIEW OF QUALIFICATION TEST PLAN AND PROCEDURE
- SURVEILLANCE DURING QUALIFICATION & ACCEPTANCE TESTING
- NON-CONFORMANCE ANALYSIS & CONTROL
- FAILURE ANALYSIS
- IMPLEMENTATION OF TRACEABILITY SYSTEM
- BALANCE BETWEEN DESIGN OPTIONS, REALISABILITY & REJECTION RATES
- IMPLEMENTATION OF CONFIGURATION CONTROL
- QUALITY AUDIT
- QA ASSESSMENT & FINAL CLEARANCE

Key aspects to success of ISRO LV projects

- REVIEW OF SPECIFICATION
- DESIGN REVIEW
- DRAWING REVIEW
- FMECA ANALYSIS
- VENDOR EVALUATION & VENDOR LIST
- PREFERRED PART LIST
- STANDARDISATION & INTERCHANGEABLE SYSTEMS
- REVIEW OF PROCESS , QUALITY & INSPECTION PLANS
- PROCESS CONTROL DURING FABRICATION
- ON LINE QUALITY CONTROL & SURVEILLANCE
- REVIEW OF ASSEMBLY & TESTING PROCEDURE
- SURVEILLANCE DURING ASSEMBLY & TESTING



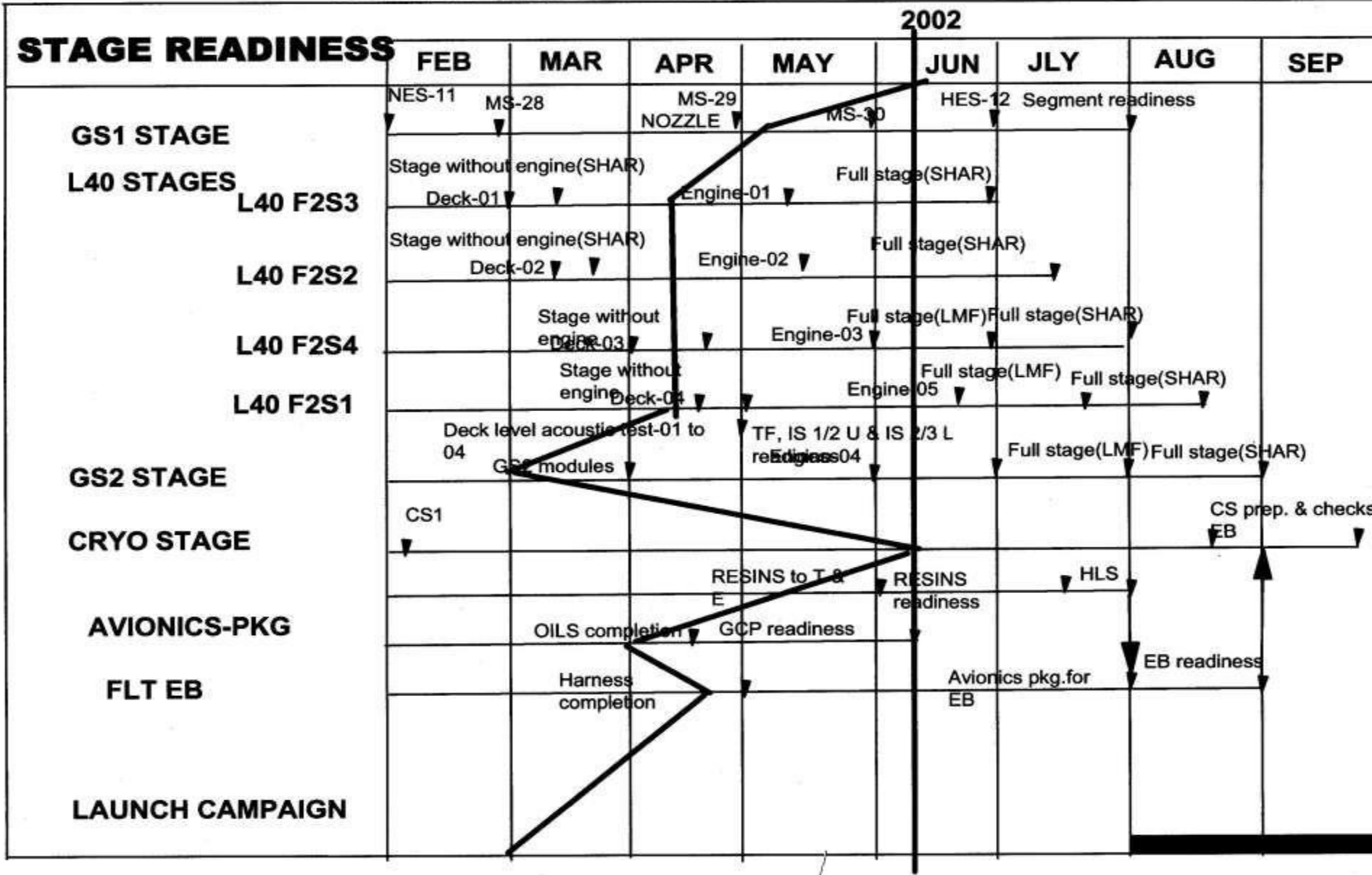
GSLV-F01 SCHEDULE

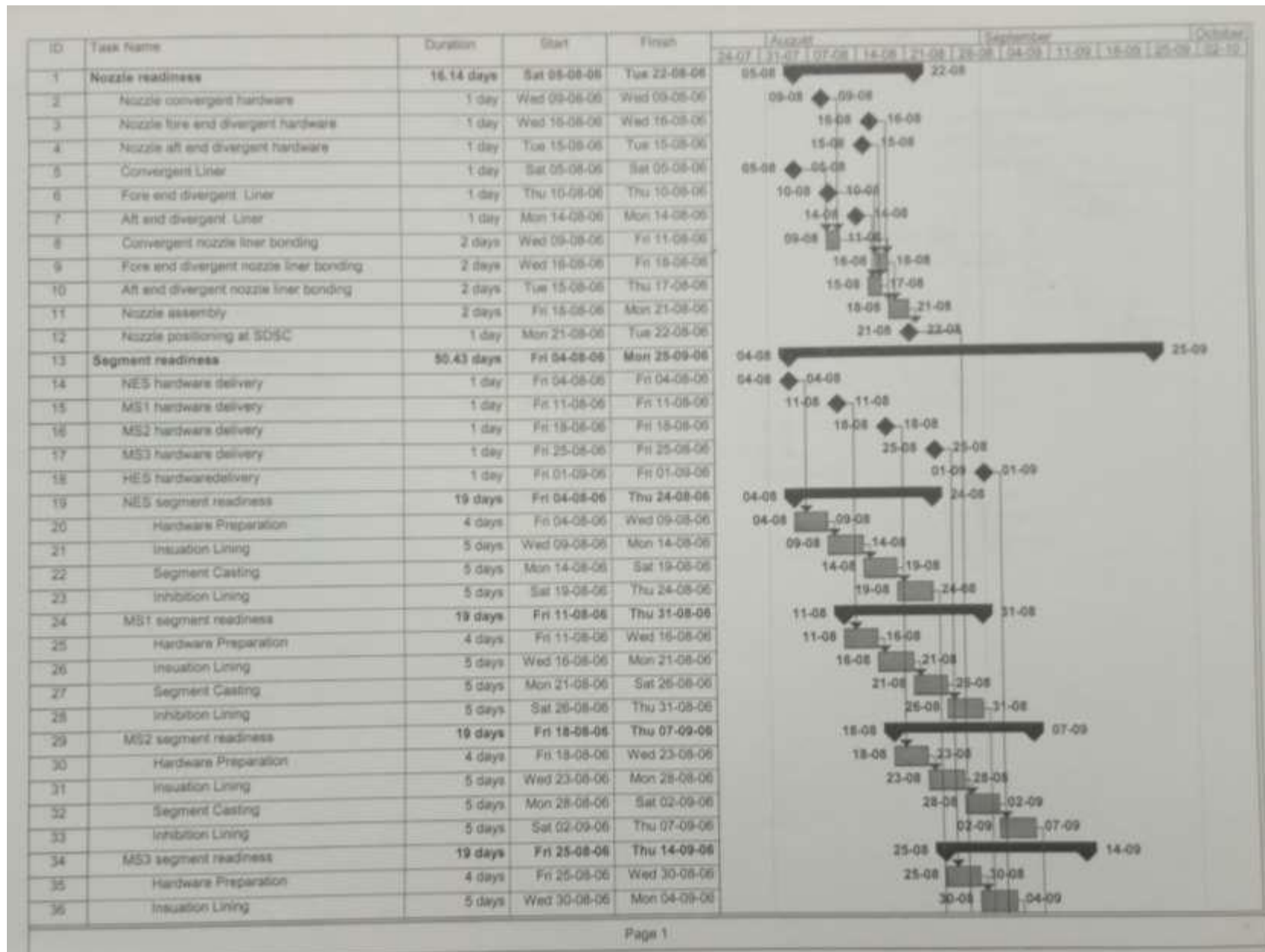
For March 2004 Launch

**STAGE / SUBASSEMBLY PREPARATION AT
WORKCENTRES**

STAGE PREPARATION AT SDSC, SHAR

GSLV-D2 STAGE PREPARATION AND LAUNCH SCHEDULE

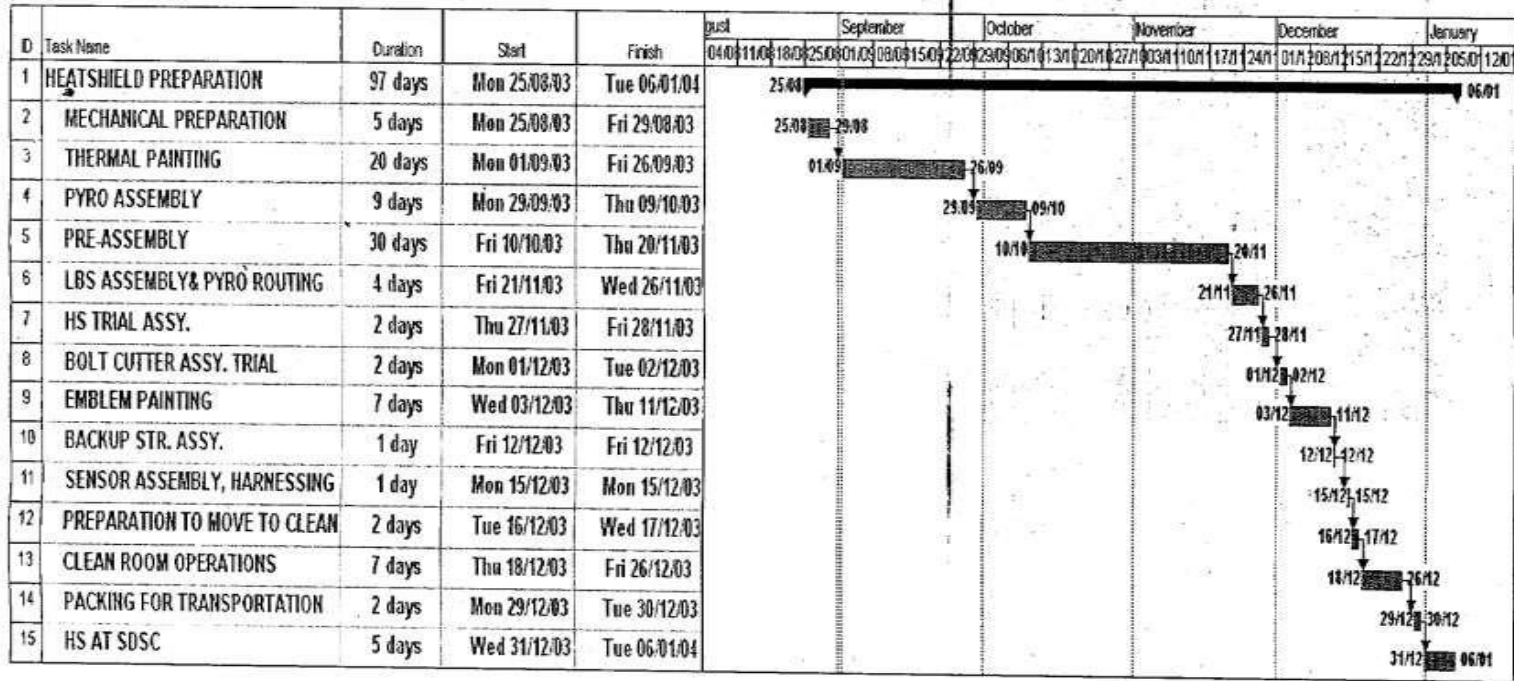




STAGE/SUBASSEMBLY PREPARATION AT WORK CENTRES

GSLV-F01 LAUNCH OPERATIONS SCHEDULE

HEATSHIELD REALISATION SCHEDULE



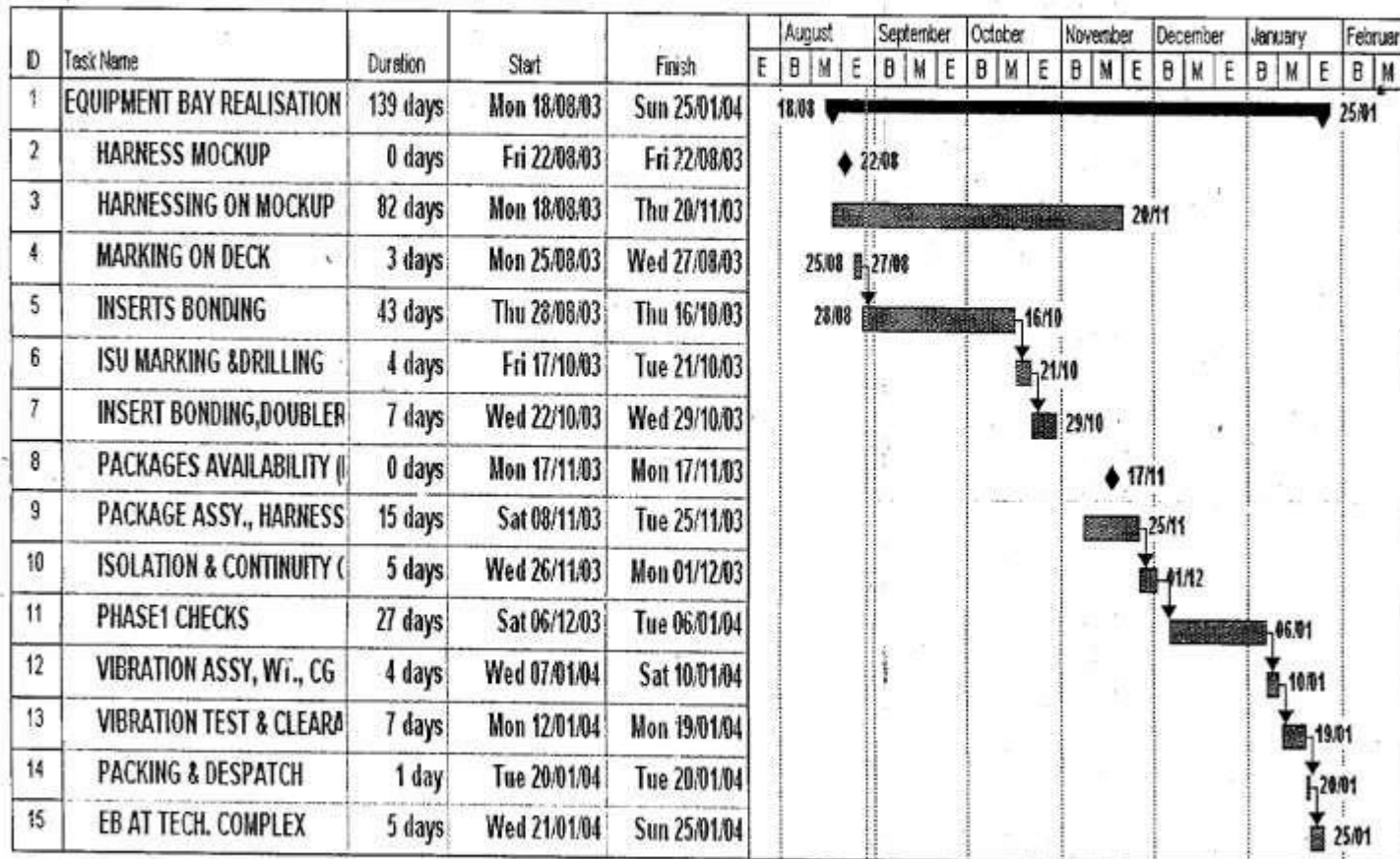
GSLV/MILC/2003

29/8/03

12

GSLV-F01 LAUNCH OPERATIONS SCHEDULE

EQUIPMENTBAY REALISATION SCHEDULE

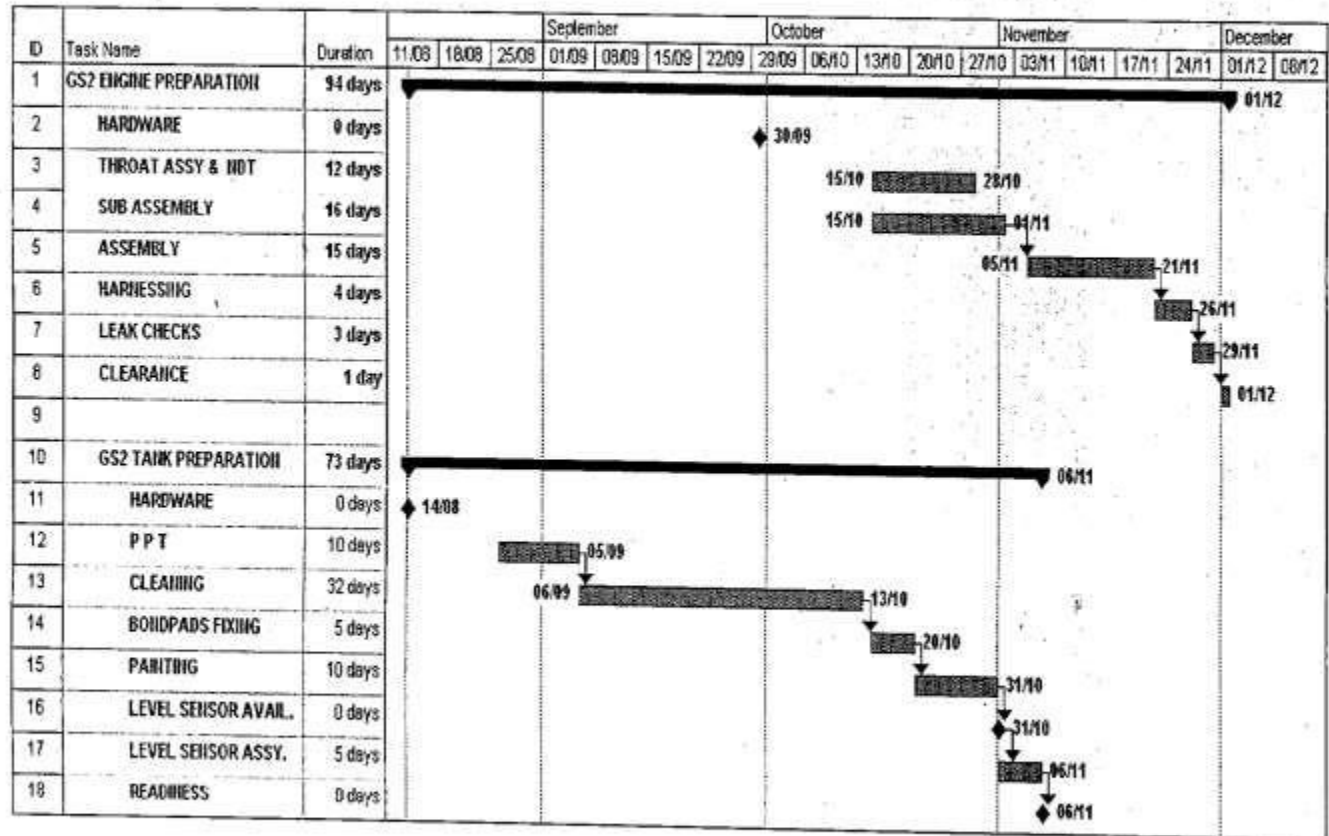


GSLV/MILC/2003

29/8/03

GSLV-F01 LAUNCH OPERATIONS SCHEDULE

ENGINE & TANK REALISATION SCHEDULE



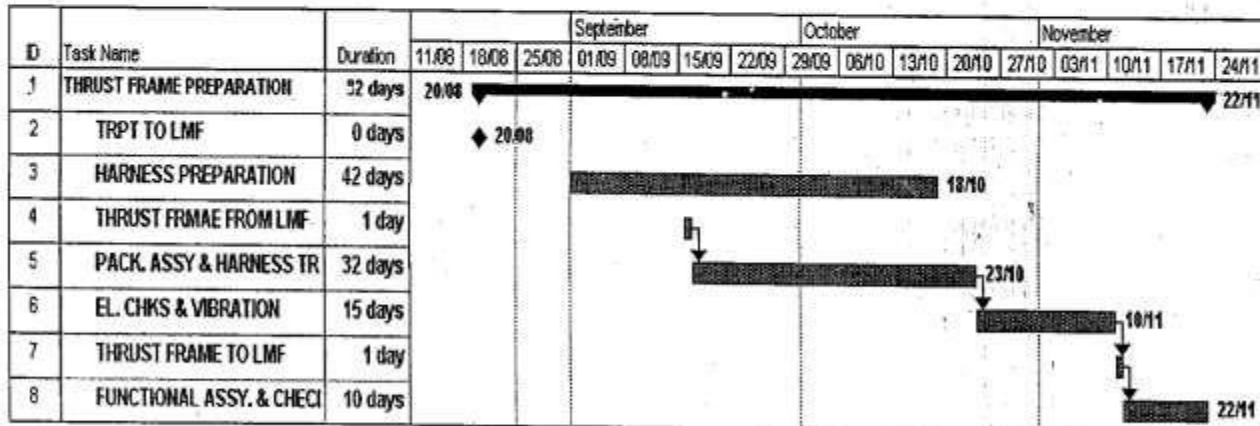
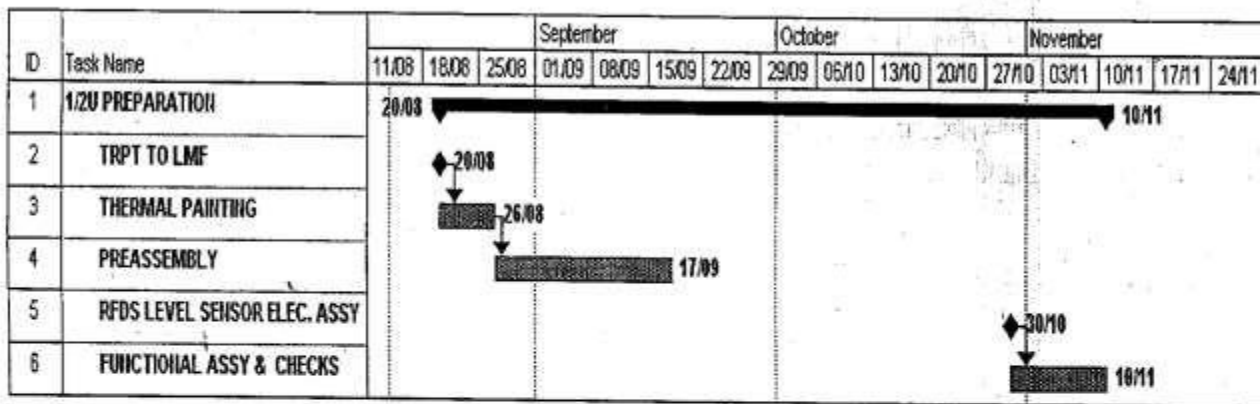
GSLV/MILC/2003

29/8/03

10

GSLV-F01 LAUNCH OPERATIONS SCHEDULE

1/2U & THRUST FRAME REALISATION SCHEDULE

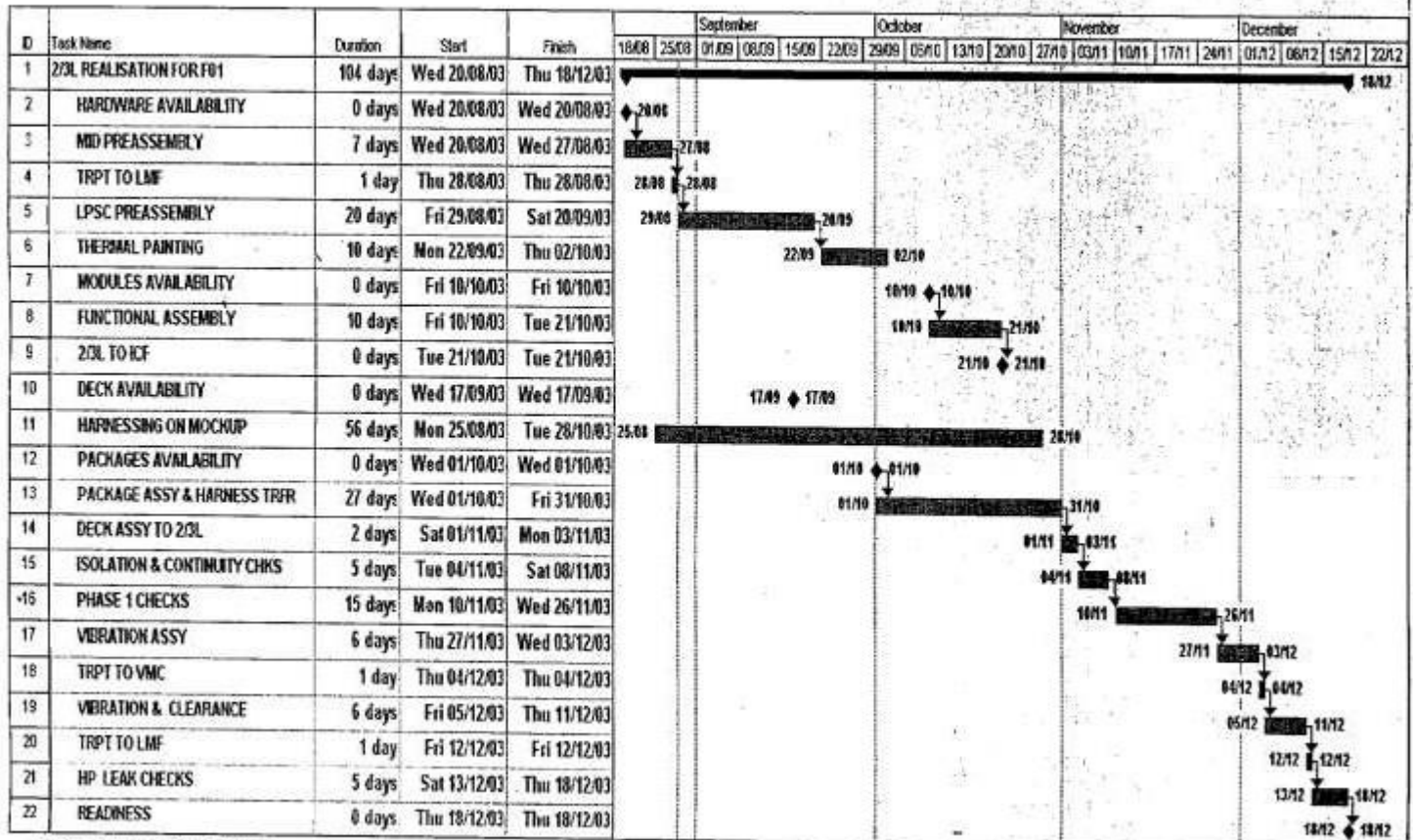


GSLV/MILC/2003

29/8/03

9

GSLV-F01 LAUNCH OPERATIONS SCHEDULE IS 2/3L REALISATION SCHEDULE

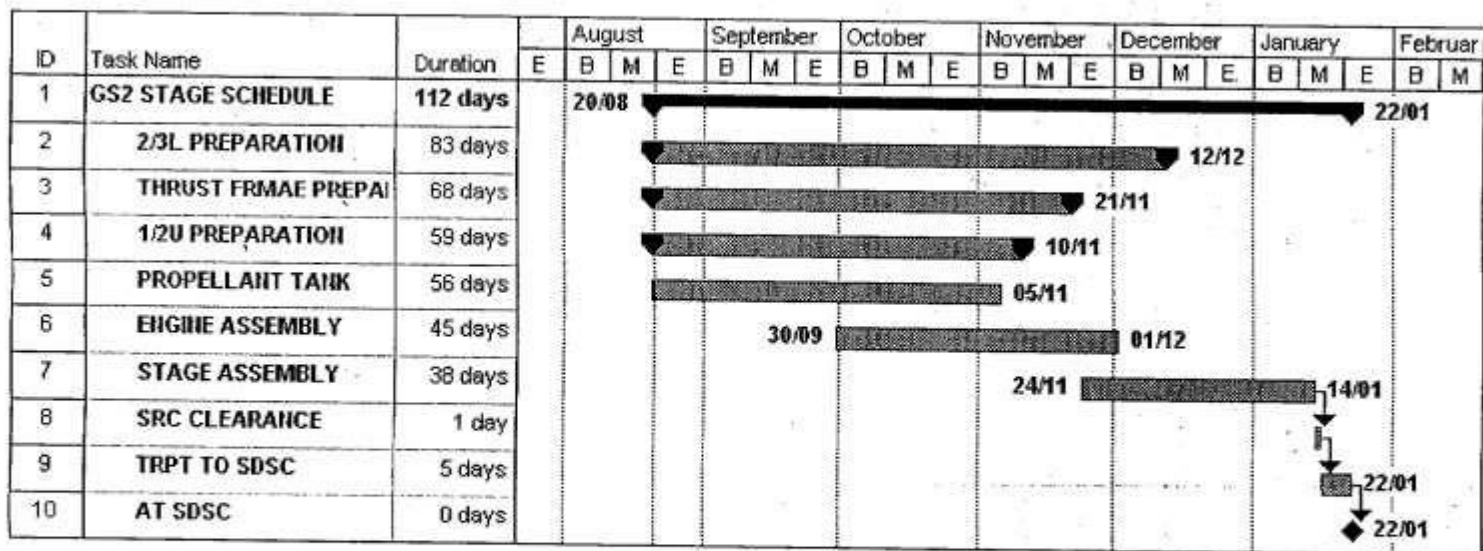


GSLV/MILC/2003

29/8/03

GSLV-F01 LAUNCH OPERATIONS SCHEDULE

GS2 STAGE REALISATION - OVERALL SCHEDULE

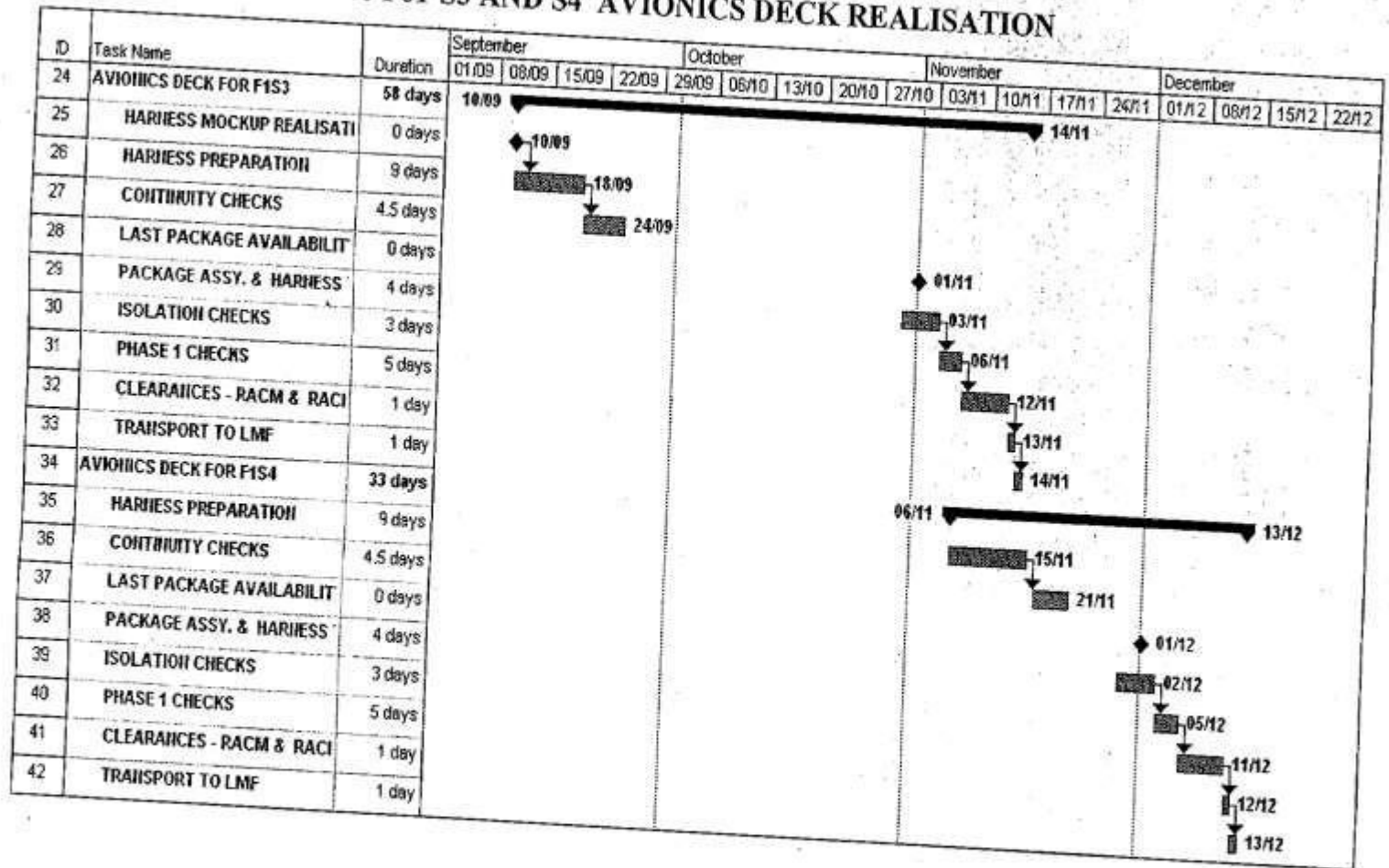


GSLV/MILC/2003

29/8/03

GSLV-F01 LAUNCH OPERATIONS SCHEDULE

L40 F01-S3 AND S4 AVIONICS DECK REALISATION

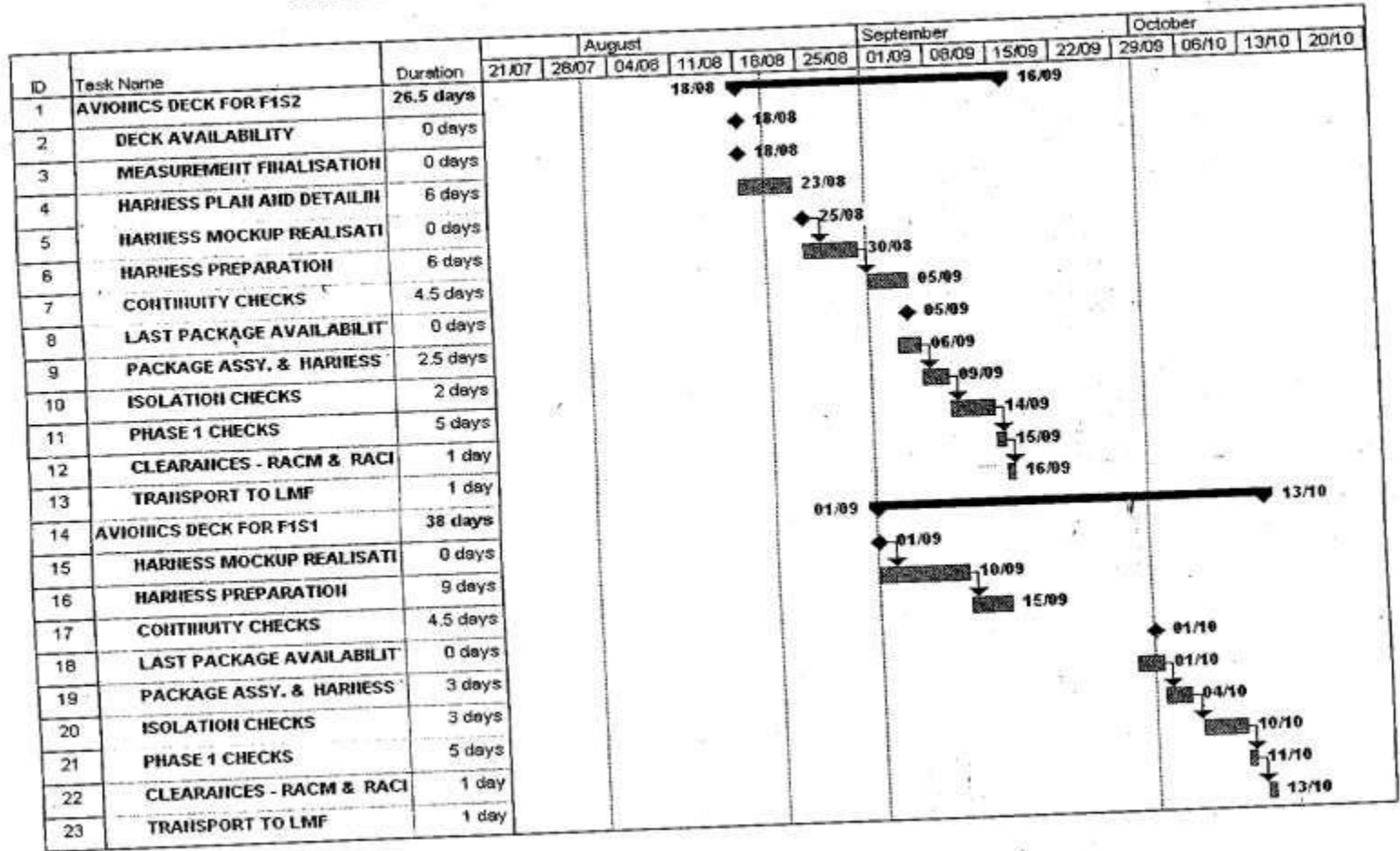


GSLV/MILC/2003

29/8/03

GSLV-F01 LAUNCH OPERATIONS SCHEDULE

L40 F01-S1 AND S2 AVIONICS DECK REALISATION

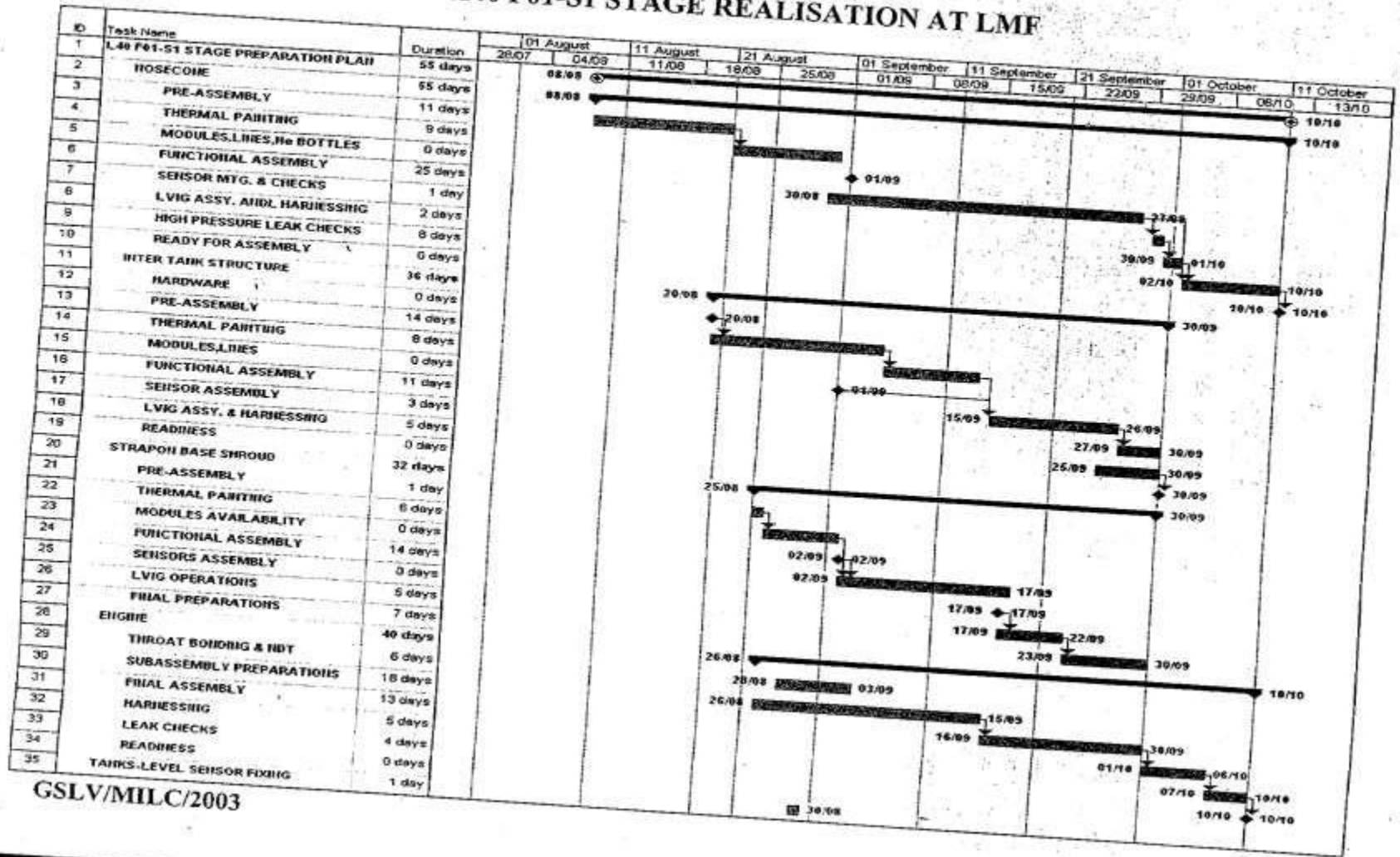


GSLV/MILC/2003

29/8/03

GSLV-F01 LAUNCH OPERATIONS SCHEDULE

L40 F01-S1 STAGE REALISATION AT LMF

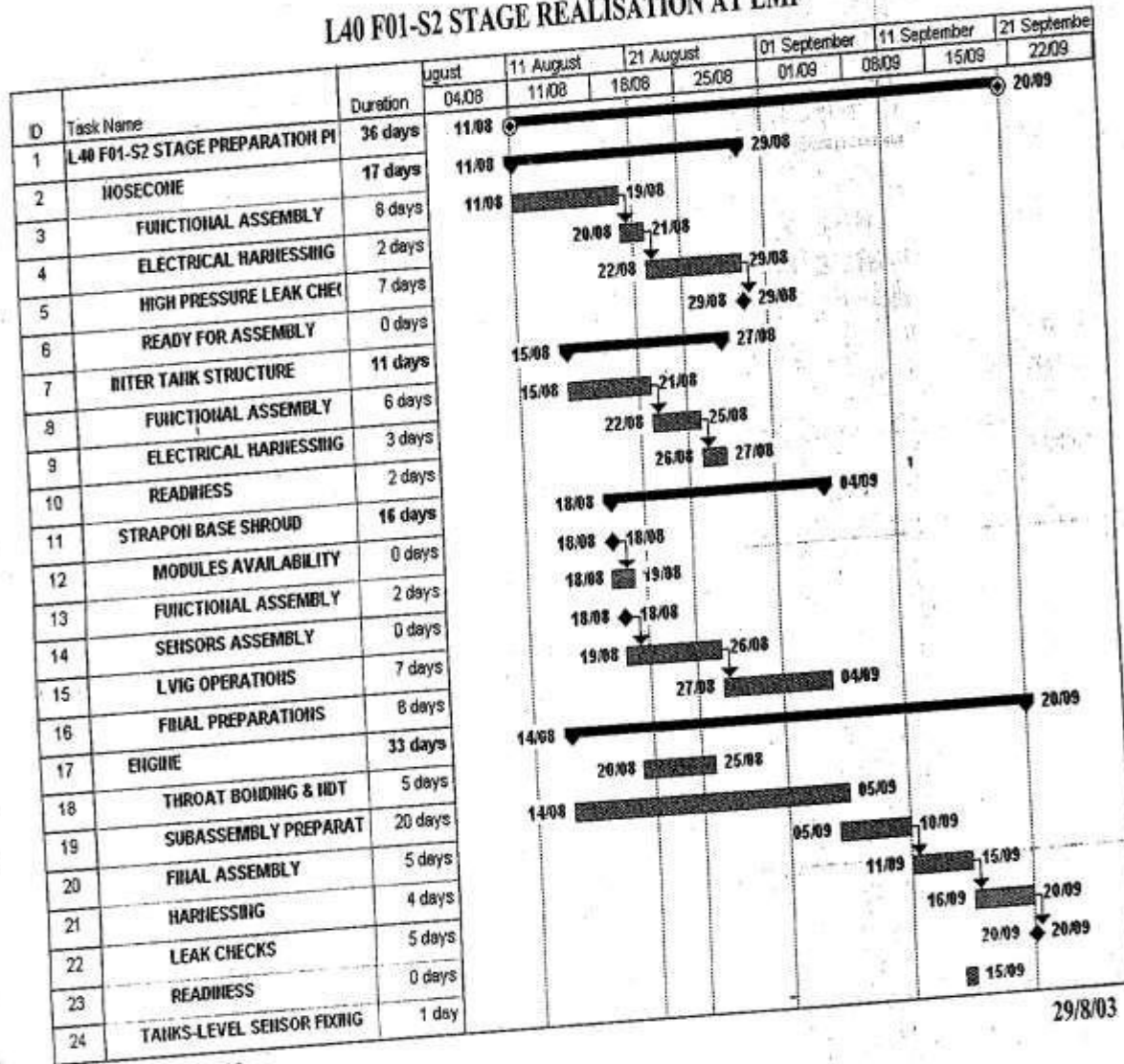


GSLV/MILC/2003

29/8/03

GSLV-F01 LAUNCH OPERATIONS SCHEDULE

L40 F01-S2 STAGE REALISATION AT LMF



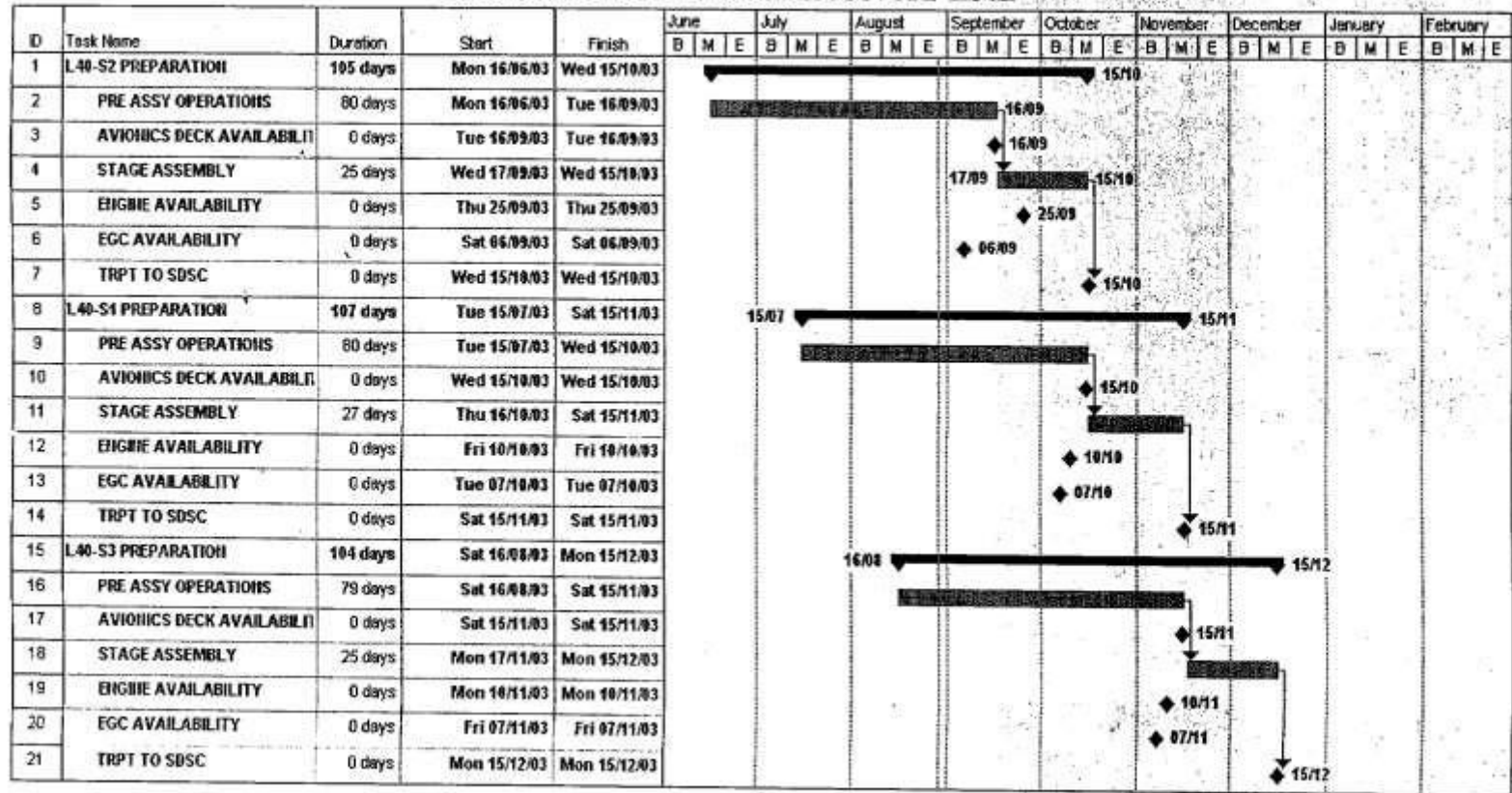
GSLV/F01/C/2003

29/8/03

3

GSLV-F01 LAUNCH OPERATIONS SCHEDULE

L40 STAGES REALISATION AT LMF



GSLV/MILC/2003

29/8/03

PREPARATION ACTIVITIES AT SDSC, SHAR

GSLV-F01 LAUNCH OPERATIONS SCHEDULE

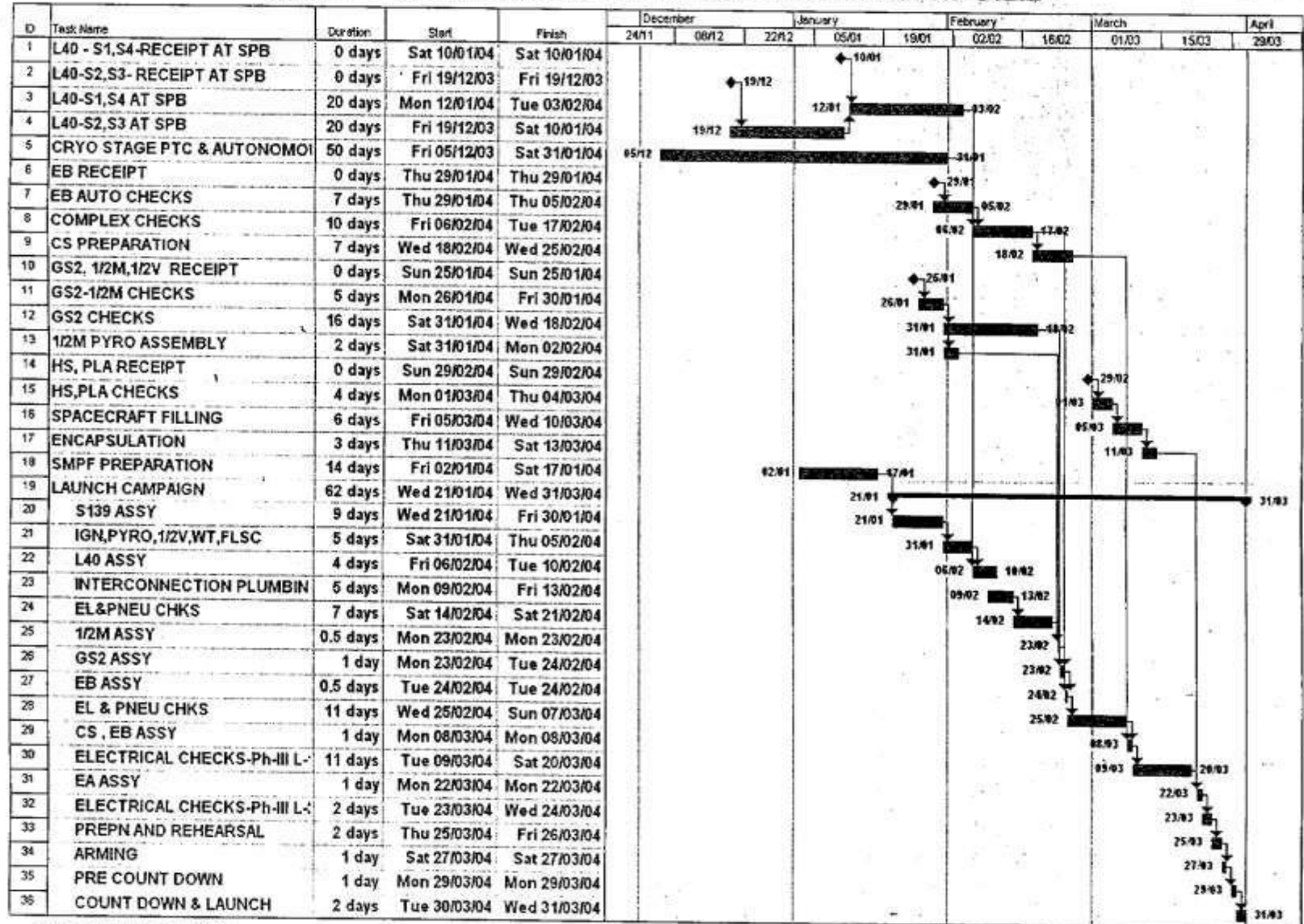
GS2 PREPARATION AT SSPF,SDSC

ID	Task Name	Duration	Start	Finish	05/01	11/01	21 January		01 February		11 February		21 February	
					05/01	12/01	19/01	26/01	02/02	09/02	16/02	23/02		
1	GS2 STAGE PREPARATION AT SSPF	23 days	Mon 26/01/04	Fri 20/02/04										
2	STAGE RECEIPT	0 days	Mon 26/01/04	Mon 26/01/04										
3	UNLOAD,INSPECT & CLEAR	1 day	Tue 27/01/04	Tue 27/01/04										
4	STAGE LEVELLING & EGC ASSY.	1 day	Tue 27/01/04	Tue 27/01/04										
5	UCA GROUND HALVES MATING	1 day	Tue 27/01/04	Tue 27/01/04										
6	UNLOAD,INSPECT & CLEAR	0 days	Mon 26/01/04	Mon 26/01/04										
7	LSSF READINESS FOR LEAK CHECK	0 days	Mon 26/01/04	Mon 26/01/04										
8	DEPRESSURISATION OF TANKS & bottles	1 day	Wed 28/01/04	Wed 28/01/04										
9	DESTRUCT RMSA ASSY	0.5 days	Wed 28/01/04	Wed 28/01/04										
10	PHASE-1 ELECTRICAL CHECKS-PART A-WITH 1/	4 days	Thu 29/01/04	Mon 02/02/04										
11	PHASE-1 ELECTRICAL CHECKS-PART B	5 days	Tue 03/02/04	Sat 07/02/04										
12	EQ. REGULATOR FILLING & TEST	1 day	Sat 07/02/04	Sat 07/02/04										
13	EGC ASSY TO ENGINE END	1 day	Sat 07/02/04	Sat 07/02/04										
14	LEAK & FUNCTIONAL CHECKS	5 days	Mon 09/02/04	Fri 13/02/04										
15	WIRE TUNNEL ASSEMBLY	1 day	Sat 14/02/04	Sat 14/02/04										
16	CLEARANCE OF STAGE OPERATIONS	1 day	Sat 14/02/04	Sat 14/02/04										
17	GS2 SEPARATION SYS. ASSY.	1 day	Sat 14/02/04	Sat 14/02/04										
18	DESTRUCT CORD & COVER ASSEMBLY	1 day	Mon 16/02/04	Mon 16/02/04										
19	EMBLEM PAINTING ON TANK	1 day	Tue 17/02/04	Tue 17/02/04										
20	THERMAL PROTECTION PADS ASSEMBLY	1 day	Wed 18/02/04	Wed 18/02/04										
21	EMBLEM PAINTING OIL PADS	1 day	Thu 19/02/04	Thu 19/02/04										
22	FINAL CLEARANCE AND LOADING TO TRANSTIL	1 day	Fri 20/02/04	Fri 20/02/04										
23	READINESS	0 days	Fri 20/02/04	Fri 20/02/04										

GSLV/MILC/2003

29/8/03

GSLV-F01 LAUNCH OPERATIONS SCHEDULE



GSLV/MILC/2003

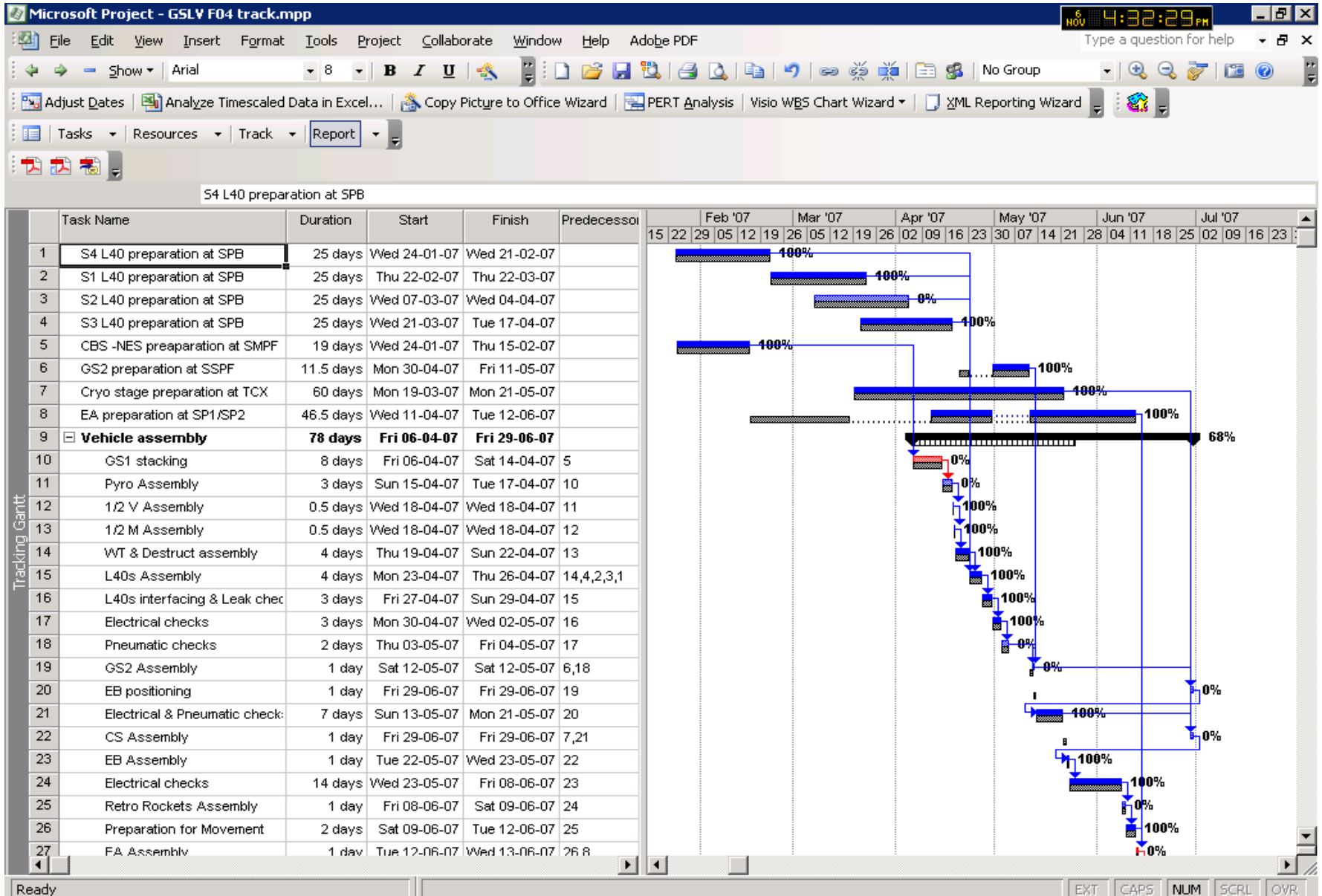
29/8/03

**PROPOSAL FOR WORKFLOW OF PROJECTMANAGEMENT IN A MULTIPROJECT ENVIRONMENT
INVESTMENT PROJECT –PSLV(CARTOSAT)**

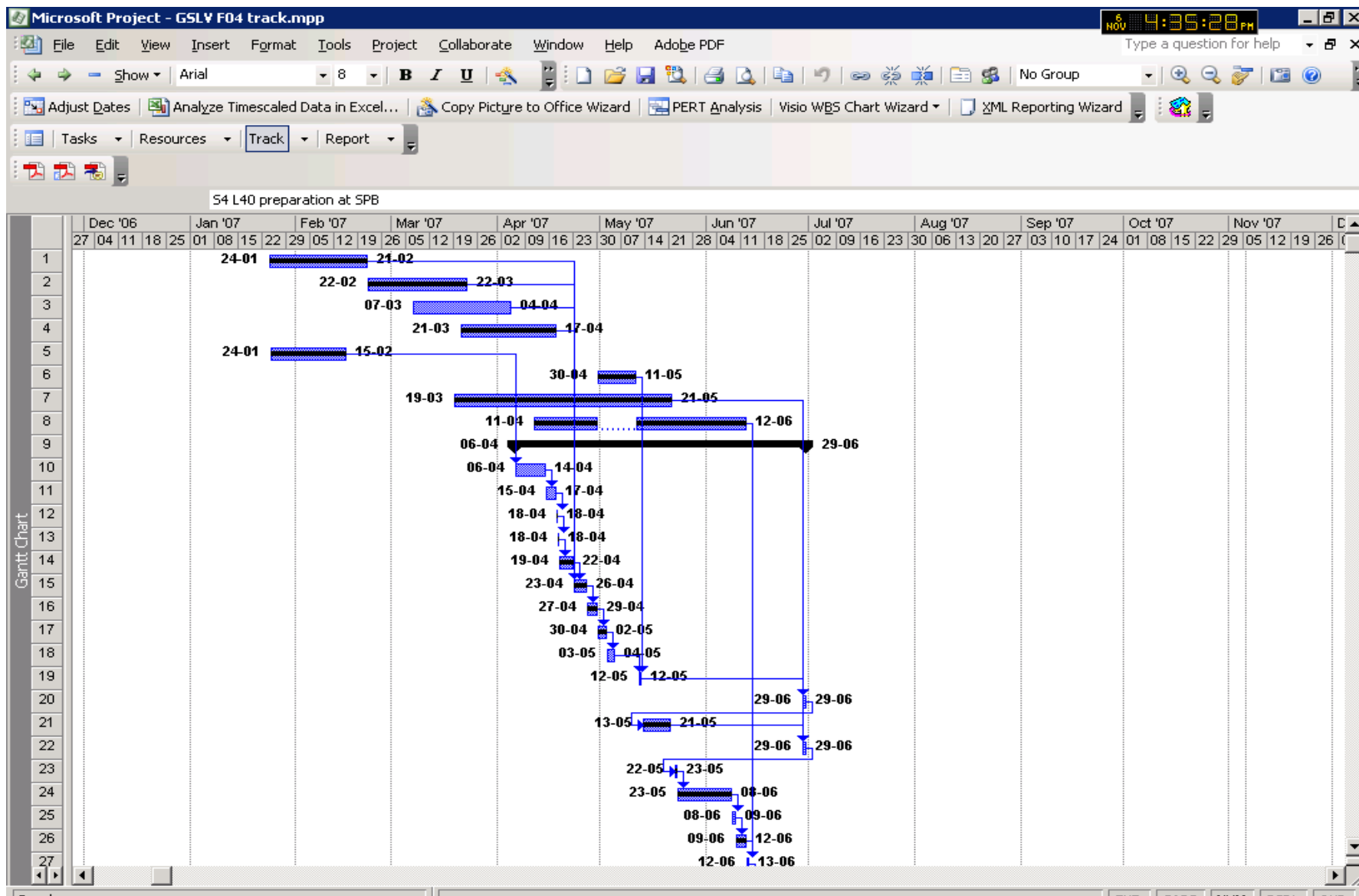
- Project Structuring–WBS from MS Project (MSP).**
- Planning Dates - MSP**
- Planning costs- MSP/COWAA**
- Budget- Zero based budgeting and COWAA**
- Execution- MSP**
- Updating actual costs, commitments- COWAA/MSP**
- Calculating Overhead & Asset under Construction.**

-COWAA.

Project Structuring–WBS from MS Project (MSP).



Planning Dates - MSP



Planning costs- MSP/COWAA (RE/BE)

Microsoft Project - GSLV F04 track.mpp

File Edit View Insert Format Tools Project Collaborate Window Help Adobe PDF

Show Arial 8 B I U No Group

Adjust Dates Analyze Timescaled Data in Excel... Copy Picture to Office Wizard PERT Analysis Visio WBS Chart Wizard XML Reporting Wizard

Tasks Resources Track Report

	Resource Name	Type	Material Label	Initials	Group	Max. Units	Std. Rate	Ovt. Rate	Cost/Use	Accrue At	Base Calendar	Code
1	ss	Work		s		100%	£25.00/hr	£10.00/hr	£0.00	Prorated	Standard	
2	kj	Material		lk			£12.00		£50.00	Start		
3	hsd	Work		h		100%	£65.00/hr	£12.00/hr	£20.00	End	Standard	
4	lko	Material		l			£35.00		£45.00	Prorated		
5	mhj	Work		m		100%	£25.00/hr	£12.00/hr	£5.00	Start	Standard	
6	xcvb	Work		x		100%	£25.00/hr	£18.00/hr	£6.00	End	Standard	
7	sdfsd	Material		s			£54.00		£5.00	Prorated		
8	cvbvcb	Work		c		100%	£25.00/hr	£35.00/hr	£15.00	Prorated	Standard	

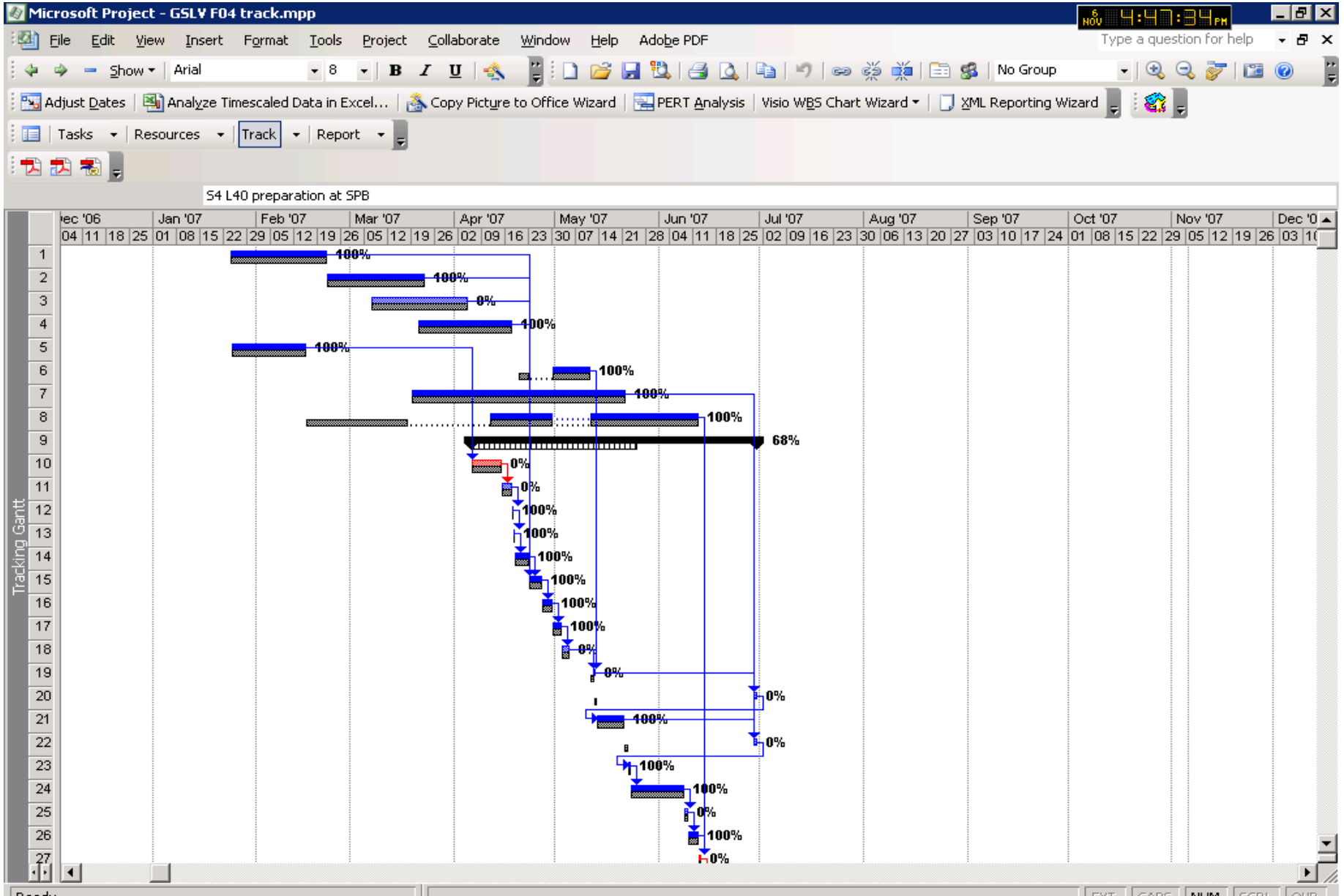
Resource Sheet

Ready

❖ **Budget- Zero based budgeting and COWAA**

- ✓ **COWAA RE/BE link with MSP**
- ✓ **All Line items to be linked to MSP WBS Elements accordingly**
- ✓ **Zero Based Budgeting**

Execution- MSP



Updating actual costs, commitments- COWAA/MSP

Microsoft Project - GSV F04 track.mpp

File Edit View Insert Format Tools Project Collaborate Window Help Adobe PDF

Show Arial 8 B I U

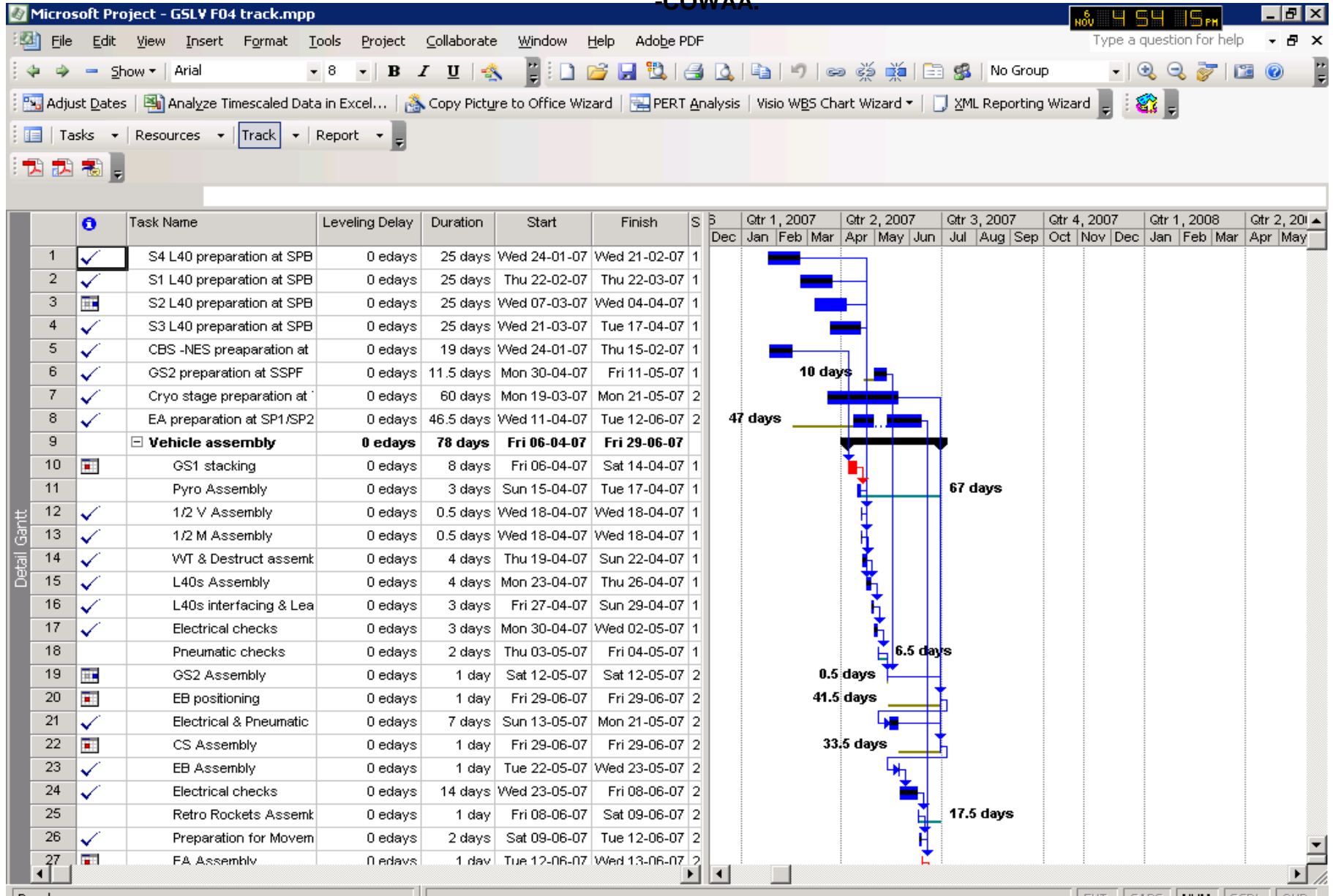
Adjust Dates Analyze Timescaled Data in Excel... Copy Picture to Office Wizard PERT Analysis Visio WBS Chart Wizard XML Reporting Wizard

Tasks Resources **Track** Report

Unassigned

Resource Name	Cost	Baseline Cost	Variance	Actual Cost	Remaining	Details	T	W	T	F	S	S	29 Je
CBS -NES pre	£3,800.00	£3,800.00	£0.00	£3,800.00	£0.00	Work		4h	8h	8h	8h		
Cryo stage pre	£12,000.00	£12,000.00	£0.00	£12,000.00	£0.00	Work							
EA preparation	£9,000.00	£9,000.00	£0.00	£9,000.00	£0.00	Work							
2 k	£310.00	£310.00	£0.00	£124.00	£186.00	Work		0.04	0.04	0.04	0.04		
S4 L40 prepara	£62.00	£62.00	£0.00	£62.00	£0.00	Work		0.04	0.04	0.04	0.04		
GS2 preparatio	£62.00	£62.00	£0.00	£62.00	£0.00	Work							
Pyro Assembly	£62.00	£62.00	£0.00	£0.00	£62.00	Work							
EB positioning	£62.00	£62.00	£0.00	£0.00	£62.00	Work							
CS Assembly	£62.00	£62.00	£0.00	£0.00	£62.00	Work							
3 hsd	£3,440.00	£3,440.00	£0.00	£2,380.00	£1,060.00	Work							
1/2 M Assembl	£280.00	£280.00	£0.00	£280.00	£0.00	Work							
WT & Destruct	£2,100.00	£2,100.00	£0.00	£2,100.00	£0.00	Work							
Pneu Assy & ci	£1,060.00	£1,060.00	£0.00	£0.00	£1,060.00	Work							
4 lko	£480.00	£480.00	£0.00	£80.00	£400.00	Work							
S2 L40 prepara	£80.00	£80.00	£0.00	£0.00	£80.00	Work							
GS1 stacking	£80.00	£80.00	£0.00	£0.00	£80.00	Work							
L40s interfacin	£80.00	£80.00	£0.00	£80.00	£0.00	Work							
Pneumatic che	£80.00	£80.00	£0.00	£0.00	£80.00	Work							
Final Preparati	£80.00	£80.00	£0.00	£0.00	£80.00	Work							
Fun checks an	£80.00	£80.00	£0.00	£0.00	£80.00	Work							
5 mhj	£10,140.00	£10,140.00	£0.00	£9,530.00	£610.00	Work							
S3 L40 prepara	£5,005.00	£5,005.00	£0.00	£5,005.00	£0.00	Work							
GS2 preparatio	£2,305.00	£2,305.00	£0.00	£2,305.00	£0.00	Work							
L40s Assembly	£805.00	£805.00	£0.00	£805.00	£0.00	Work							
L40s interfacin	£605.00	£605.00	£0.00	£605.00	£0.00	Work							
Electrical chec	£605.00	£605.00	£0.00	£605.00	£0.00	Work							
FR Assembly	£205.00	£205.00	£0.00	£205.00	£0.00	Work							

Calculating Overhead & Asset under Construction. -COWAA.



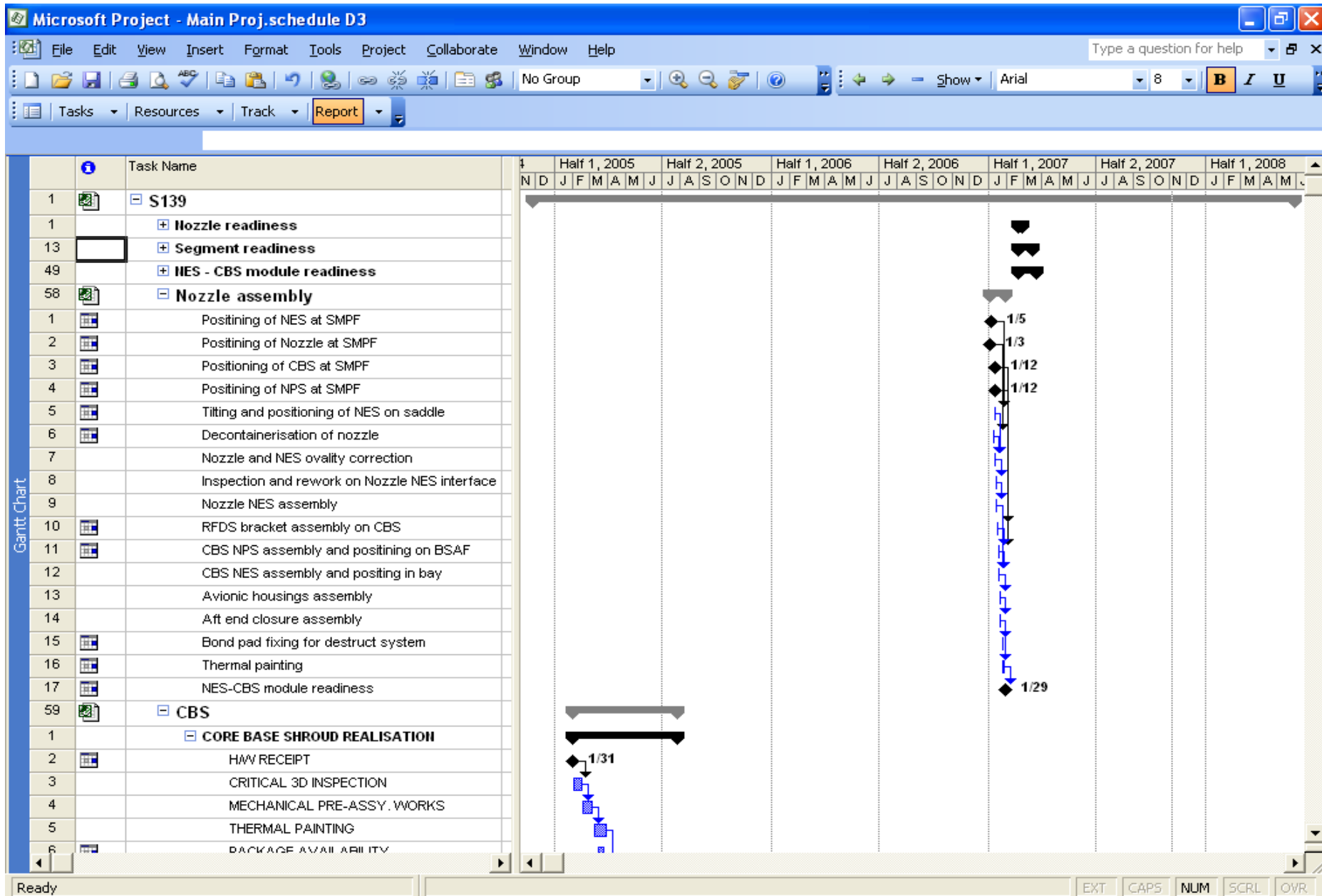
CUSTOMER PROJECT (PSLV – AGILE)

- ❖ **Customer Inquiry- From Other countries**
- ❖ **Create a Project – After vetted by ISRO HQ’s, using MSP**
- ❖ **Plan dates- MSP**
- ❖ **Plan resources- MSP**
- ❖ **Plan materials by transferring BOM- MSP**
- ❖ **Plan Costs- COWAA**
- ❖ **Create sales pricing and sales order with billing plan- S&D at HQ’s**
- ❖ **Enter Confirmations- MSP**
- ❖ **Purchase materials and services - MSP**
- ❖ **Document variances - MSP**
- ❖ **Post revenues using milestone billing- MSP**
- ❖ **Sales Order- Invoice Closed- S&D AT ISRO HQ’s**
- ❖ **Calculate Overhead costs and carry out result analysis and settle it to profitability segment- COWAA/MSP**
- ❖ **Defect liability period (Post live and Go support) – ISRO HQ’s.**

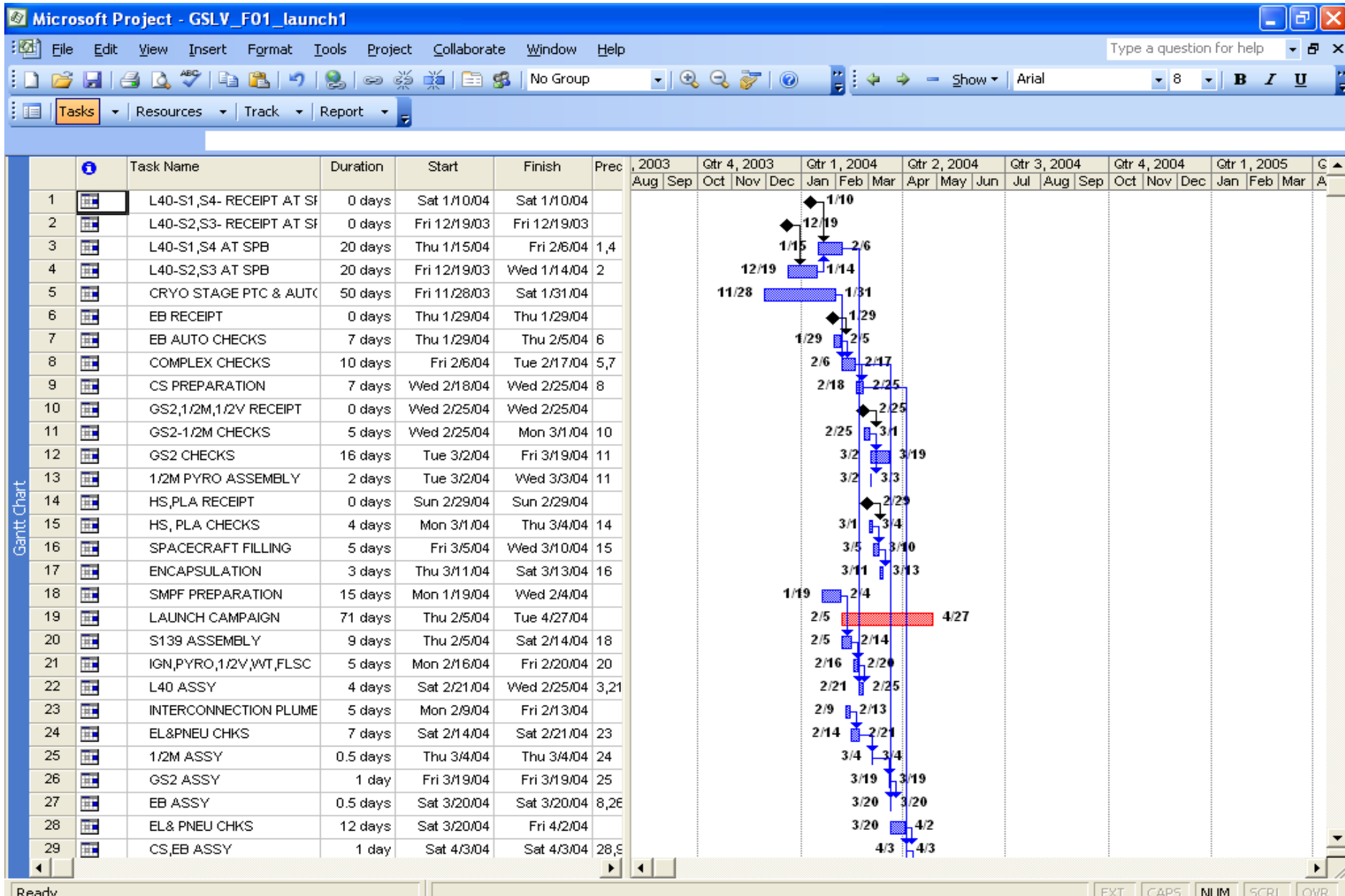
❖ Customer Inquiry- From Other countries

- ✓ Customer Inquiry from different countries
- ✓ Feasibility study at ISRO HQ's
- ✓ Time frame to launch
- ✓ Choice of Launch Vehicle from VSSC

❖ Create a Project – After vetted by ISRO HQ’s, using MSP



❖ Plan dates- MSP



Microsoft Project - Main Proj.schedule D3

File Edit View Insert Format Tools Project Collaborate Window Help

Type a question for help

No Group Show Arial 8 B I U

Tasks Resources Track Report

	Resource Name	Type	Material Label	Initials	Group	Max. Units	Std. Rate	Ovt. Rate	Cost/Use	Accrue At	Base Calendar	Code
1	VAST	Work		V		Max. Units (Max Units) Help on Max Units		Rs.9.00/hr	Rs.2.00	Prorated	Standard	
2	MID	Work		M				Rs.3.00/hr	Rs.0.00	Prorated	Standard	
3	LSSF	Work		L		100%	Rs.23.00/hr	Rs.9.00/hr	Rs.54.00	Prorated	Standard	
4	LPSC	Work		L		100%	Rs.12.00/hr	Rs.9.00/hr	Rs.69.00	Prorated	Standard	
5	EID	Work		E		100%	Rs.54.00/hr	Rs.9.00/hr	Rs.58.00	Prorated	Standard	
6	LMF	Work		L		100%	Rs.69.00/hr	Rs.9.00/hr	Rs.45.00	Prorated	Standard	
7	SOG	Work		S		100%	Rs.45.00/hr	Rs.9.00/hr	Rs.62.00	Prorated	Standard	
8	ALL	Work		A		100%	Rs.78.00/hr	Rs.9.00/hr	Rs.12.00	Prorated	Standard	
9	LVIG	Work		L		100%	Rs.98.00/hr	Rs.9.00/hr	Rs.32.00	Prorated	Standard	
10	SRQA	Work		S		100%	Rs.21.00/hr	Rs.9.00/hr	Rs.10.00	Prorated	Standard	
11	CNSF	Work		C		100%	Rs.12.00/hr	Rs.9.00/hr	Rs.20.00	Prorated	Standard	
12	LVIG LSSF	Work		L		100%	Rs.120.00/hr	Rs.9.00/hr	Rs.65.00	Prorated	Standard	
13	LSSF VAST	Work		L		100%	Rs.25.00/hr	Rs.9.00/hr	Rs.41.00	Prorated	Standard	
1	VAST	Work		V		100%	Rs.54.00/hr	Rs.9.00/hr	Rs.52.00	Prorated	Standard	
2	MID	Work		M		100%	Rs.565.00/hr	Rs.9.00/hr	Rs.32.00	Prorated	Standard	
3	LSSF	Work		L		100%	Rs.213.00/hr	Rs.9.00/hr	Rs.16.00	Prorated	Standard	
4	LPSC	Work		L		100%	Rs.12.00/hr	Rs.9.00/hr	Rs.15.00	Prorated	Standard	
5	EID	Work		E		100%	Rs.32.00/hr	Rs.9.00/hr	Rs.14.00	Prorated	Standard	
6	LMF	Work		L		100%	Rs.25.00/hr	Rs.9.00/hr	Rs.98.00	Prorated	Standard	
7	SOG	Work		S		100%	Rs.45.00/hr	Rs.9.00/hr	Rs.65.00	Prorated	Standard	
8	ALL	Work		A		100%	Rs.10.00/hr	Rs.9.00/hr	Rs.20.00	Prorated	Standard	
9	LVIG	Work		L		100%	Rs.21.00/hr	Rs.9.00/hr	Rs.12.00	Prorated	Standard	
10	SRQA	Work		S		100%	Rs.65.00/hr	Rs.8.00/hr	Rs.10.00	Prorated	Standard	
11	CNSF	Work		C		100%	Rs.98.00/hr	Rs.7.00/hr	Rs.32.00	Prorated	Standard	
12	LVIG LSSF	Work		L		100%	Rs.102.00/hr	Rs.7.00/hr	Rs.10.00	Prorated	Standard	
13	LSSF VAST	Work		L		100%	Rs.32.00/hr	Rs.4.00/hr	Rs.54.00	Prorated	Standard	
1	VAST	Work		V		100%	Rs.10.00/hr	Rs.1.00/hr	Rs.66.00	Prorated	Standard	
2	MID	Work		M		100%	Rs.15.00/hr	Rs.2.00/hr	Rs.55.00	Prorated	Standard	
3	LSSF	Work		L		100%	Rs.65.00/hr	Rs.3.00/hr	Rs.44.00	Prorated	Standard	

Resource Sheet

❖ Plan materials by transferring BOM- MSP

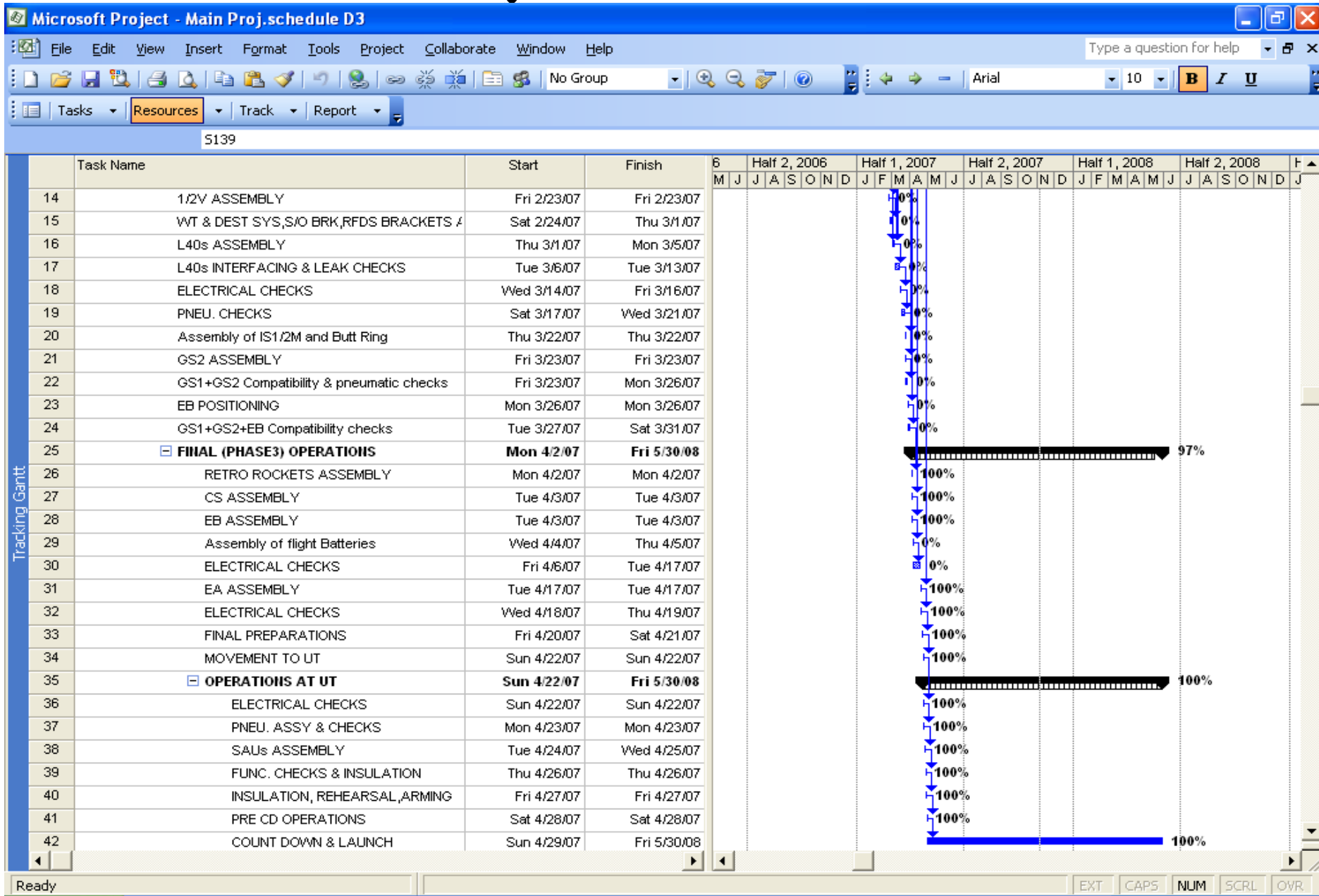
Microsoft Project - Main Proj.schedule D3													
File Edit View Insert Format Tools Project Collaborate Window Help													
Type a question for help													
Tasks Resources Track Report													
Work													
		Resource Name	Type	Material Label	Initials	Group	Max. Units	Std. Rate	Ovt. Rate	Cost/Use	Accrue At	Base Calendar	Code
11		CNSF	Work		C		100%	Rs.98.00/hr	Rs.7.00/hr	Rs.32.00	Prorated	Standard	
12		LVIG LSSF	Work		L		100%	Rs.102.00/hr	Rs.7.00/hr	Rs.10.00	Prorated	Standard	
13		LSSF VAST	Work		L		100%	Rs.32.00/hr	Rs.4.00/hr	Rs.54.00	Prorated	Standard	
1		VAST	Work		V		100%	Rs.10.00/hr	Rs.1.00/hr	Rs.66.00	Prorated	Standard	
2		MID	Work		M		100%	Rs.15.00/hr	Rs.2.00/hr	Rs.55.00	Prorated	Standard	
3		LSSF	Work		L		100%	Rs.65.00/hr	Rs.3.00/hr	Rs.44.00	Prorated	Standard	
4		LPSC	Work		L		100%	Rs.12.00/hr	Rs.6.00/hr	Rs.33.00	Prorated	Standard	
5		EID	Work		E		100%	Rs.254.00/hr	Rs.5.00/hr	Rs.22.00	Prorated	Standard	
6		LMF	Work		L		100%	Rs.147.00/hr	Rs.7.00/hr	Rs.11.00	Prorated	Standard	
7		SOG	Work		S		100%	Rs.213.00/hr	Rs.8.00/hr	Rs.20.00	Prorated	Standard	
8		ALL	Work		A		100%	Rs.120.00/hr	Rs.9.00/hr	Rs.15.00	Prorated	Standard	
9		LVIG	Work		L		100%	Rs.150.00/hr	Rs.4.00/hr	Rs.45.00	Prorated	Standard	
10		SRQA	Work		S		100%	Rs.321.00/hr	Rs.6.00/hr	Rs.48.00	Prorated	Standard	
11		CNSF	Work		C		100%	Rs.15.00/hr	Rs.5.00/hr	Rs.49.00	Prorated	Standard	
12		LVIG LSSF	Work		L		100%	Rs.20.00/hr	Rs.1.00/hr	Rs.97.00	Prorated	Standard	
13		LSSF VAST	Work		L		100%	Rs.120.00/hr	Rs.2.00/hr	Rs.98.00	Prorated	Standard	
1		VAST	Work		V		100%	Rs.45.00/hr	Rs.3.00/hr	Rs.65.00	Prorated	Standard	
2		MID	Work		M		100%	Rs.12.00/hr	Rs.2.00/hr	Rs.32.00	Prorated	Standard	
3		LSSF	Work		L		100%	Rs.32.00/hr	Rs.1.00/hr	Rs.31.00	Prorated	Standard	
4		LPSC	Work		L		100%	Rs.56.00/hr	Rs.4.00/hr	Rs.20.00	Prorated	Standard	
5		EID	Work		E		100%	Rs.54.00/hr	Rs.5.00/hr	Rs.25.00	Prorated	Standard	
6		LMF	Work		L		100%	Rs.154.00/hr	Rs.6.00/hr	Rs.65.00	Prorated	Standard	
7		SOG	Material		S			Rs.654.00		Rs.23.00	Prorated		
8		ALL	Material		A			Rs.254.00		Rs.12.00	End		
9		LVIG	Material		L			Rs.365.00		Rs.25.00	Start		
10		SRQA	Material		S			Rs.986.00		Rs.65.00	End		
11		CNSF	Material		C			Rs.125.00		Rs.32.00	Prorated		
12		LVIG LSSF	Work		L		100%	Rs.65.00/hr	Rs.0.00/hr	Rs.56.00	Prorated	Standard	
13		LSSF VAST	Work		L		100%	Rs.32.00/hr	Rs.2.00/hr	Rs.54.00	Prorated	Standard	

❖ Plan Costs- COWAA

- ✓ Plan Costs using COWAA/MSP Interface
- ✓ Zero Based budgeting
- ✓ Line items to be linked with Project's WBS

❖ Create sales pricing and sales order with billing plan- S&D at HQ's

- ✓ Separate Sales module from ISRO HQ's
- ✓ To be linked to all centres
- ✓ Rights to be given to PMO's



❖ Purchase materials and services - COWAA

- ✓ Purchasing happening through COWAA to be linked with MS Project
- ✓ Control should be line item wise and it should be updated automatically in WBS of Master schedule.

❖ Document variances - MSP

- ✓ Changes in documentation during different processes

❖ **Post revenues using milestone billing- MSP**

- ✓ Revenues made out of the project after milestone is achieved to be given to the concerned PMO's
- ✓ Above function link to be given between PMO's and ISRO HQ's

❖ **Sales Order- Invoice Closed- S&D AT ISRO HQ's**

- ✓ In the separate sales module at ISRO HQ's should intimate formal closure of payment
- ✓ Rights to be given to concerned PMO's

❖ **Calculate Overhead costs and carry out result analysis and settle it to profitability segment- COWAA/MSP**

Microsoft Project - Main Proj.schedule D3

File Edit View Insert Format Tools Project Collaborate Window Help

Tasks Resources Track Report

Rs.0.00

Task Name	Fixed Cost	Fixed Cost Accrual	Total Cost	Baseline	Variance	Actual	Remaining
34 SHAR SPB RE	\$0.00	Prorated	\$33,095.00	\$0.00	\$33,095.00	\$0.00	\$33,095.00
1 Receipt of AM	Rs.0.00	Start	Rs.102.00	Rs.0.00	Rs.102.00	Rs.0.00	Rs.102.00
2 Disassy of TS	Rs.0.00	Prorated	Rs.62.00	Rs.0.00	Rs.62.00	Rs.0.00	Rs.62.00
3 Alignment of .	Rs.0.00	Prorated	Rs.42.00	Rs.2.00	Rs.40.00	Rs.0.00	Rs.42.00
4 Receipt of F/E	Rs.0.00	Prorated	Rs.102.00	Rs.10.00	Rs.92.00	Rs.0.00	Rs.102.00
5 Alignment of I	Rs.0.00	Prorated	Rs.42.00	Rs.0.00	Rs.42.00	Rs.0.00	Rs.42.00
6 Certification c	Rs.0.00	Prorated	Rs.31.00	Rs.0.00	Rs.31.00	Rs.0.00	Rs.31.00
7 Removal of S	Rs.0.00	Prorated	Rs.66.00	Rs.0.00	Rs.66.00	Rs.0.00	Rs.66.00
8 Pending activ	Rs.0.00	Prorated	Rs.2,352.00	Rs.0.00	Rs.2,352.00	Rs.0.00	Rs.2,352.00
9 Helium sniffer	Rs.0.00	Prorated	Rs.998.00	Rs.0.00	Rs.998.00	Rs.0.00	Rs.998.00
10 UT of propelle	Rs.0.00	Prorated	Rs.1,086.00	Rs.0.00	Rs.1,086.00	Rs.0.00	Rs.1,086.00
11 Assy of sens	Rs.0.00	Prorated	Rs.194.00	Rs.0.00	Rs.194.00	Rs.0.00	Rs.194.00
12 Readiness of	Rs.0.00	Prorated	Rs.620.00	Rs.0.00	Rs.620.00	Rs.0.00	Rs.620.00
13 Electrically cc	Rs.0.00	Prorated	Rs.1,600.00	Rs.0.00	Rs.1,600.00	Rs.0.00	Rs.1,600.00
14 Phase I electr	Rs.0.00	Prorated	Rs.3,756.00	Rs.0.00	Rs.3,756.00	Rs.0.00	Rs.3,756.00
15 FEA leak che	Rs.0.00	Prorated	Rs.3,013.00	Rs.0.00	Rs.3,013.00	Rs.0.00	Rs.3,013.00
16 AEA leak che	Rs.0.00	Prorated	Rs.1,221.00	Rs.0.00	Rs.1,221.00	Rs.0.00	Rs.1,221.00
17 Insulation wir	Rs.0.00	Prorated	Rs.403.00	Rs.0.00	Rs.403.00	Rs.0.00	Rs.403.00
18 Final assy of	Rs.0.00	Prorated	Rs.467.00	Rs.0.00	Rs.467.00	Rs.0.00	Rs.467.00
19 RMSA actuati	Rs.0.00	Prorated	Rs.523.00	Rs.0.00	Rs.523.00	Rs.0.00	Rs.523.00
20 Inspection an	Rs.0.00	Prorated	Rs.402.00	Rs.0.00	Rs.402.00	Rs.0.00	Rs.402.00
21 Integration of	Rs.0.00	Prorated	Rs.759.00	Rs.0.00	Rs.759.00	Rs.0.00	Rs.759.00
22 Eq. Regulator	Rs.0.00	Prorated	Rs.848.00	Rs.0.00	Rs.848.00	Rs.0.00	Rs.848.00
23 Leak check o	Rs.0.00	Prorated	Rs.6,320.00	Rs.0.00	Rs.6,320.00	Rs.0.00	Rs.6,320.00
24 Eq. Regulator	Rs.0.00	Prorated	Rs.549.00	Rs.0.00	Rs.549.00	Rs.0.00	Rs.549.00
25 Fin assembly	Rs.0.00	Prorated	Rs.194.00	Rs.0.00	Rs.194.00	Rs.0.00	Rs.194.00
26 Avionic deck	Rs.0.00	Prorated	Rs.1,096.00	Rs.0.00	Rs.1,096.00	Rs.0.00	Rs.1,096.00
27 EGC assy	Rs.0.00	Prorated	Rs.314.00	Rs.0.00	Rs.314.00	Rs.0.00	Rs.314.00
28 Disassy of V:	Rs.0.00	Prorated	Rs.827.00	Rs.0.00	Rs.827.00	Rs.0.00	Rs.827.00

Tracking Gantt

006 Half 1, 2007 Half 2, 2

O N D J F M A M J J A S

❖ **Defect liability period (Post live and Go support) – ISRO HQ's.**

- ✓ After launching successfully and placing the satellite in orbit ISRO HQ's should give adequate information about the satellite health and how customer's feedback.
- ✓ It should be linked from ISRO HQ's through mailing services for all centre's.

CONCLUSION:

Thus the program management in an aerospace industry was discussed in detail in this paper.



CORRESPONDING AUTHOR

Mr.D.Suresh, working as Assistant Professor, Department of Mechanical Engineering in Roever Engineering College, Perambalur and worked as Assistant Professor (Senior Grade), Department of Mechanical Engineering, Kongu Engineering College, Erode, Tamil Nadu, completed BE (Mechanical Engineering) from Kongu Engineering College in 2001(Secured 10th Rank in Bharathiyar University Coimbatore), M.E (Industrial Engineering) from REC Trichy (presently NIT Trichy) in January 2003, MBA from IGNOU and SAP PS Certified Consultant. He has work experieexperience of over 15 years which includes MM Forgings, ISRO, Keane, SAT Infotech, SPML, Mphasis an HP Company, Sterling and Wilson, Integrity Solutions, Seal Infotech, Oxford Engineering College, Indra Ganesan College of Engineering. He has worked in Strategic Planning, Functional Consultant,Program Management,Project Management/System, Solid Propulsion System, Estimation and Materials Management, Academician and contributed significantly for growth of organisations/companies worked. Holds Distinction in Obtaining GSLV Model for completing service period of four years (2004-2008) at VSSC-GSLV Project and Successful GSLV PMO for Approval from DOS for ISRO-GSLV Operational Flights F04-F10 costing Rs.1325 crores. and prepared (approval from centre) for F11-F16 flights costing Rs.1280.96 crores. Mentored project “Chainless Bicycle” which was granted -Design Patent- by Indian Patent Office. His research interested areas are Project Management, ERP, and Operations Management. He has published few papers in these areas. Member of ISTE and IEI India.

Mail Id: sureshraaj80@gmail.com

Ph.Numb:+91- 9489070995; 6369204929

Orcid id: <https://orcid.org/0000-0002-4133-1805>