

# Literacy and Employment Status of Tribal Population in Darjiling District, West Bengal

PunamaSen\*, & Prof. Ranjan Roy\*\*

Ph.D Scholar\* & Professor\*\*

Dept. of Geography & Applied Geography, University Of North Bengal

**Abstract:** The process of development of any region or area is characterized by various socio economic and infrastructural factors, but in overall the most important factor is education. Literacy is essential for eradicating poverty and mental isolation, for cultivating peaceful and friendly international relation. Illiteracy, on the other hand takes away from man his dignity, increase poverty and mental isolation and also hampers social advancement, economic growth and political maturity. Improvement in education is an important index of social and cultural advancement and economic transformation that the country under goes. Education and employment plays a dominant role in influencing the quality of human resource. The socio-cultural factor that effecting education and work participation, and also occupational structure of population are highly related to the productivity and economic growth of the country. The present paper is designed to analyze the progress, spatial variation, inter block variation, gender disparity in literacy and also the variation in work participation rate and different occupational category of Darjiling district, West Bengal.

**Keyword:** Education, Employment, Literacy, Disparity.

## Introduction

Literacy level is an important characteristic of population. In fact, it is an important indicator of socio cultural development and political consciousness (Husain 2013). The process of development of any region or area is characterized by various socio economic and infrastructure factors, but in overall the most important factor is education (Yadav 2009). Literacy is essential for eradicating poverty and mental isolation, for cultivating peaceful and friendly international relation. Illiteracy, on the other hand takes away from man his dignity, increase poverty and mental isolation and also hampers social advancement, economic growth and political maturity. Above all literacy influences other such attributes of population as fertility, mortality, mobility, occupation etc (Chandana1986). Improvement in education is an important index of social and cultural advancement and economic transformation that the country under goes (khullar1999). Literacy and basic education liberates people. Human resource refers to the abilities of people in a country that have working skill, good health, education and experience that are important for economic growth. Education and employment plays a dominant role in influencing the quality of human resource (Hannan 2013). The socio-cultural factor that effecting education and work participation, and also occupational structure of population are highly related to the productivity and economic growth of the country. Education is not only effecting the work participation but also the occupational structure. The concept of literacy, which varies from country to country, generally refers to the minimum level of literacy skill. According to the census of 2011, in India, literacy has been defined as any person above the age of 7 years, who can read and write with understanding in any one language, is treated as literate (Husain 2013). The main advantage of literacy is that it provides relatively more opportunity of employment. The tribal population in India represents an enormous diversity of groups. They live largely in isolation but they spread over the length and breadth of the country. When we talk about the tribal they considered as the backward community. Education and employment plays an important part for the development of tribal community. The process of development of any region or area is characterized by various socio economic and infrastructure factors, but in overall the most important factor is education and employment. This is also true for the tribal society. The present paper is designed to analyze the progress, spatial variation, inter block variation, gender

disparity in tribal literacy and also the variation in work participation rate and different occupational category of Darjiling district, West Bengal.

### Study area

Darjiling district is the northern most districts in the state of West Bengal which lies in the foothill zone of Himalaya. Previously the district comprises of 4 sub-division namely 1.Darjeeling sadar 2.Kalimpong 3.Kurseong 4.Siliguri. But Kalimpong was separated and it officially became a separate district on 14<sup>th</sup> February 2017. Presently it has 3 sub-division, which consist of 9 blocks. Darjeeling sadar have 3 blocks namely Darjeeling-pulbazar, Rangli rangliot, Jorebunglow-sukiapokhri, Kurseong sub-division has only one block which is Kurseong, and Siliguri sub-division have 4 blocks namely Matigara,Naxalbari, Kharibari, Phansidewa. The district is bounded by Sikkim on the north, on the west by Nepal and Bihar state and Uttar Dinajpur district on the south. The district Darjeeling lies between 26°31'N and 27° 13'N latitude and between 87°59'E and 88°30'E longitude.



Fig.1 Location map of Darjiling District.

### Objectives

The present study is based on the following objectives:

1. To study the spatial variation in literacy rate and gender disparity of tribal population.
2. To study the work participation rate and different occupational structure.
3. To examine the relation between literacy rate and occupational category.

### Database and methodology

The present study is entirely based on secondary data. Secondary data relating to literacy and working category have been collected from district census handbook, primary census abstract and village directory.

To show the relative concentration of tribal population location Quotient has been used

Location Quotient

$$LQ_i = (P_{ij}/P_i) / (P_j/P)$$

Where,  $P_{ij}$ =number of person in  $j$ th category of area  $i$ .

$P_i$ = total population in all the categories of area  $i$

$P_j$ = sum of persons of category  $j$  in all the  $n$  areas

P= total population of the region in each category.

Percentage of tribal literate to the total tribal population have been calculated for showing the gender disparity in different blocks Sopher's disparity index, modified by Kundu & Rao (1985) has been used.

$$Ds = \text{Log}(X2/X1) + \text{Log} [(200-X1)/(200-X2)]$$

Where, Ds is gender disparity index,

X1 is percentage of literate female to total female population

X2 is percentage literate male to total male population.

The spatial pattern of tribal population by literacy rate and occupational structure has been examined. To reach the standardization, the data from each indicator have been calculated into Standard Score.

$$Z_i = \frac{X_i - \bar{x}}{SD}$$

Where, Zi is standard score.

Xi is original values for observation i

X bar is the mean for the variable and SD is the standard deviation.

Now the average of standard score has been calculated which is known as composite score.

$$CS = \frac{\sum Z_{ij}}{n}$$

Where, CS in Composite Score

N is refers to the number of variable

$\sum Z_{ij}$  Indicates Z-score of all variables 'i' in block j.

### Concentration of Tribal population

Table.1 Block-wise concentration of tribal population (2011).

Name of the Blocks	LQ for ST
Darjeeling Pulbazar	1.15995
Rangli Rangliot	1.33153
Jorebunglow Sukiapokhri	1.20927
Mirik	1.24003
Kurseong	1.24770
Matigara	0.54061
Naxalbari	0.78796
Phansidewa	1.23248
Kharibari	0.78371

Source: Calculated from census HandBook.

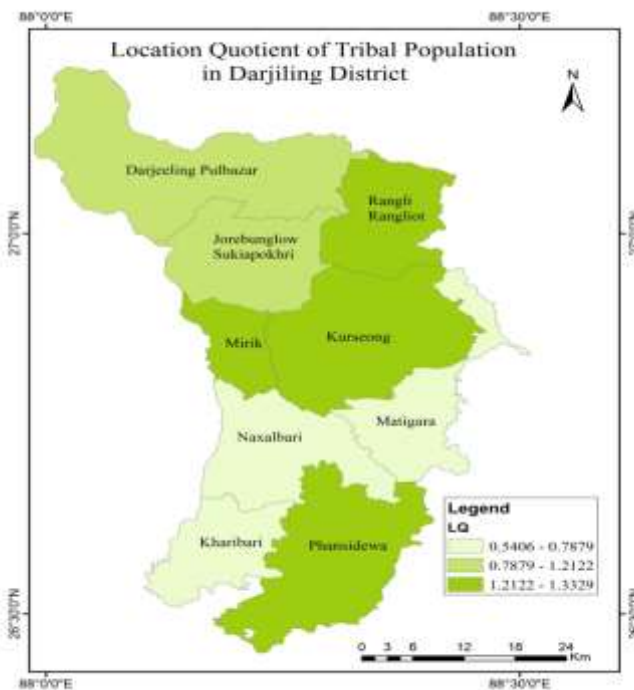


Fig.2 Location Quotient of tribal population

The value of location Quotient shows the concentration of scheduled tribe population. the value of LQ shows that the higher concentration of tribal is mainly on the hilly region. The highest value which is 1.33 is found on Rangli Rangliot. The majority which is including the indigeneous ethnic groups are Bhutia, Lepcha, Limbu, Tamang, Subba. Five blocks of the hilly part of the district which is Darjeeling pulbazar, Rangli rangliot, jorebunglow and Mirik has the high concentration of ST's. In the plain region Phansidewa block has also a hig concentration with the LQ value of 1.23. the tribal community in the plain is different from the hill area. The indigenous people like Santhal, Oraon, Munda, Bhumij are mostly concentrated in plain. The tribal population in Naxalbari and Kharibari it is quit balanced. In Matigara the population of Scheduled tribe is quit dispersed.

**Trends of Tribal literacy rate**

India is continuously improving its literacy rate but tribal literacy rate is still low in India. In 1961 literacy rate in India was only 28.31% where 15.35% is for female and 40.4% for male only. But for St Population it was very low only 10.27% where 3.29% for female and 16.69% for male. The increasing rate of tribal literacy in India is very slowly. In 1991 literacy rate in India was 52.21% but for tribal it was only 29.60%. Table.1 is showing tribal literacy rate in India, West Bengal & Darjiling District since 1991. During a span of thirty years from 1991 to 2011 for India it grows from 29.60% to 58.96%. But this rate is below country average. In 1991 the tribal literacy rate is 27.78% for West Bengal and 39.37% for Darjiling District. In 1991 female tribal literacy rate is very low in West Bengal i.e. 14.82%, but for Darjiling district it is little high which is 30.77%.

Table 2.Trends of Tribal literacy rate of India, West Bengal and Darjiling district (1991-2011)

census year	India			West Bengal			Darjiling		
	T	M	F	T	M	F	T	M	F
1991	29.6	40.65	18.91	27.78	40.06	14.82	39.37	47.54	30.77
2001	47.1	59.17	34.76	43.4	57.38	29.15	55.48	67.07	45.85
2011	58.96	68.53	49.35	57.92	68.16	47.71	74.26	81.5	67.16

Source: Census of India

In 2001 a slight improvement in literacy rate was observed in comparison to the previous decade. It was 47.10% for nation average, 43.4% in West Bengal and 55.48% in Darjiling district. But from 2001 to 2011 the rate is not very high. It increases only to 58.98% for India and 57.92% for West Bengal. But for Darjiling district it increased to 74.26%. Though the tribal literacy rate is high in the district but there is a block-wise variation.

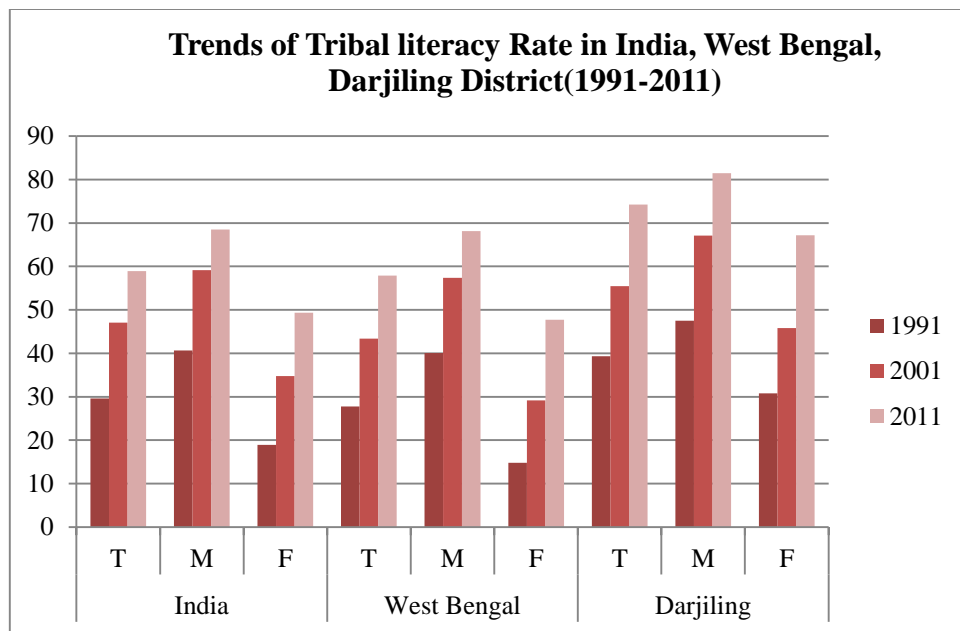


Fig.3 Trends of Tribal literacy Rate

**Trends of Tribal employment rate**

The study of employment rate and structure is one of the most important part of population geography. The state of employment rate in India is less as compared to many developed countries in the world. According to 2011 census work participation rate in India is 39.79%. But for tribal people the employment rate is higher than the national average. Table.2 is showing the employment rate of three decades. For tribal people the employment rate is not very changing. In 1991 work participation rate was 42.03% in India for West Bengal it was 47.71% but for Darjiling district it is low i.e 39.49%. In2001 it slightly increased 44.82%. In 2001 female work participation for tribal (53.20%) was higher than the male population (49.06%).for Darjiling district it increase from 1991 (39.49%) to 2001 (40.85%) ,but in 2011 it again decrease to 39.24% . Female work participation for tribal is low and also decreased from 2001 (33.49%) to 2011(30.81%). In west Bengal male employment rate increases from 53.75% to 55.49% but for female employment rate it again decreases from 43.69% (2001) to 39.24% (2011).

Table 3.Trends of Tribal employment rate of India, West Bengal and Darjiling district (1991-2011)

Census year	India			West Bengal			Darjiling		
	T	M	F	T	M	F	T	M	F
1991	42.03	54.74	43.71	47.66	54.04	41.03	39.49	48.07	30.49
2001	44.82	49.06	53.2	48.77	53.75	43.69	40.85	48.17	33.49
2011	48.74	53.91	43.52	47.37	55.49	39.24	39.73	48.78	30.81

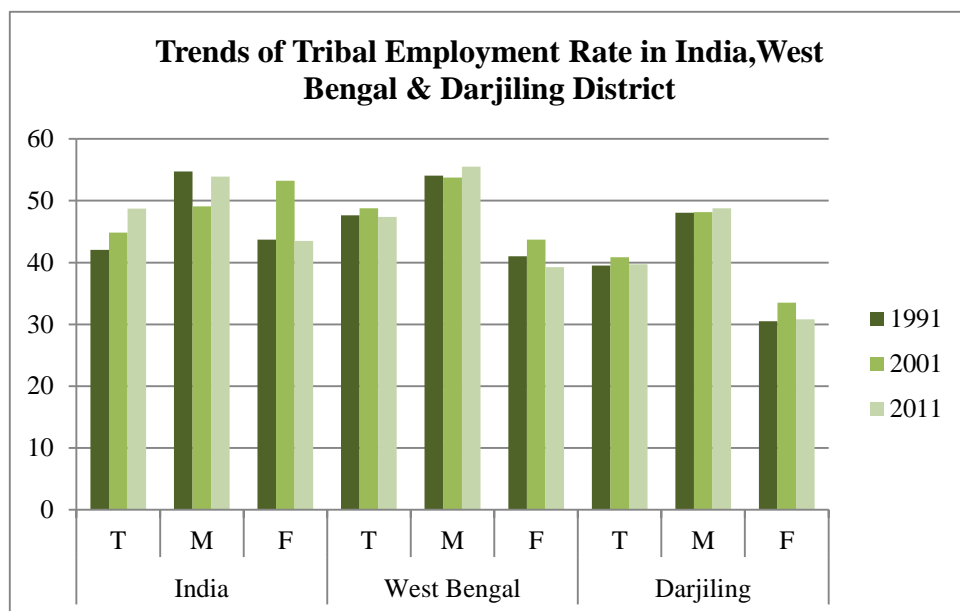


Fig.4 Trends of Tribal employment Rate

**Block Wise Variation of Tribal Literacy Rate (2011):**

There is a huge variation in terms of literacy rate among different blocks. This variation is even more prominent between the blocks under the hilly and plain region. Out of 9 blocks under Darjiling district, 5 blocks named Darjiling Pulbazar, Rangli Rangliot, Jorebunglow Sukiapokhri, Mirik, Kurseong are high altitude blocks and the remaining 4 named Phansidewa, Matigara, Naxalbari and Kharibari come under plain region. The tribal communities, who live in the hilly area and plain area under this district, are different to each other. In one case the Lepchas, Bhutias, Tibetans, Limbus and various Nepalees are living in the hilly area; on the other hand as the plain area is covered by very thick forest, it is inhabited by indigenous tribal groups like Koch, Dhimal and others like them. They mainly live upon cultivation, jhoom cultivation, nomadic (Ref: District gazetteers, Darjeeling, 1907 edition, author LSS O'Malley, ICS, Superintendent of Census).

Table 4. Block wise variation in Tribal Literacy Rate Gender Disparity of Darjiling District (2011)

BLOCK NAME	TOTAL	MALE	FEMALE	DISPARITY INDEX
Darjeeling Pulbazar	79.94	86.82	72.94	0.126
Rangli Rangliot	80.50	87.66	73.50	0.128
Jorebunglow Sukiapokhri	82.62	89.38	76.18	0.118
Mirik	79.16	87.03	71.20	0.144
Kurseong	77.69	85.82	69.58	0.149
Matigara	64.39	73.78	55.47	0.183
Naxalbari	61.97	71.51	52.67	0.192
Phansidewa	58.03	67.26	49.20	0.191
Kharibari	52.63	62.76	42.61	0.228

Source: Census of India

\*Excluding 0-6 population

The literacy rate among the tribal people who live in the hilly region, is comparatively sound than that of who live in the plain region under the district. Under this district the highest literacy rate in the block named Jorebunglow Sukiapokhri i.e. 82.62% and the lowest literacy rate in Kharibari block i.e. 52.63%. The literacy rates of the other

blocks are as follows: Darjiling Pulbazar 79.94%, Mirik 79.16%, Rangli Rangliot 80.50%, Kurseong 77.69% and Phasidewa 58.03%, Matigara 64.39%, Naxalbari 61.97%.

### **Gender Disparity in Tribal Literacy (2011):**

The gender disparity in tribal literacy of Darjiling district has been shown here by Modified Shopper Index. From the above table we can see that there is not a single block whose female literacy rate is higher than the male one. So disparity is very prominent. Though the block Jorebunglow Sukiapokhri has the highest literacy rate among all the 9 blocks under Darjiling district but there is a gap between the male and female literacy rate; where the male literacy rate is 89.38%, the female literacy rate is 76.18%, the disparity index is 0.118. Female literacy rate is highest in this block among all. The male literacy rate of other blocks is as follows. : Darjiling Pulbazar 86.82%, Mirik 87.03%, Rangli Rangliot 87.66%, Kurseong 85.82%. From the higher altitude blocks female literacy is low in Kurseong i.e 69.58%. Tribal female literacy rate in the other blocks are Darjiling Pulbazar 72.94%, Mirik 71.20%, Rangli Rangliot 73.50%. Disparity index in Mirik and Kurseong is little high i.e .144 & .149 respectively. On the other hand gender disparity is high in the other 4 blocks. Kharibari block has the lowest literacy rate (52.63%) as well as it's disparity index (0.228) is highest among all the blocks under Darjiling district which is very alarming. Most importantly the female literacy rate is only 42.61%. Naxalbari & Phansidewa has the disparity of .192 & .191 which is also on the higher side and female tribal literacy is also low i.e. 52.67% and 49.20% respectively. As the tribal people of the 3 blocks Naxalbari, Phasidewa, Kharibari, live mostly in rural areas; the gender disparity is also very high for those blocks. These are the top three blocks in terms of gender disparity. The whole scenario is showing the block which have high literacy rate has low gender disparity and the block which has low literacy rate has the high gender disparity.

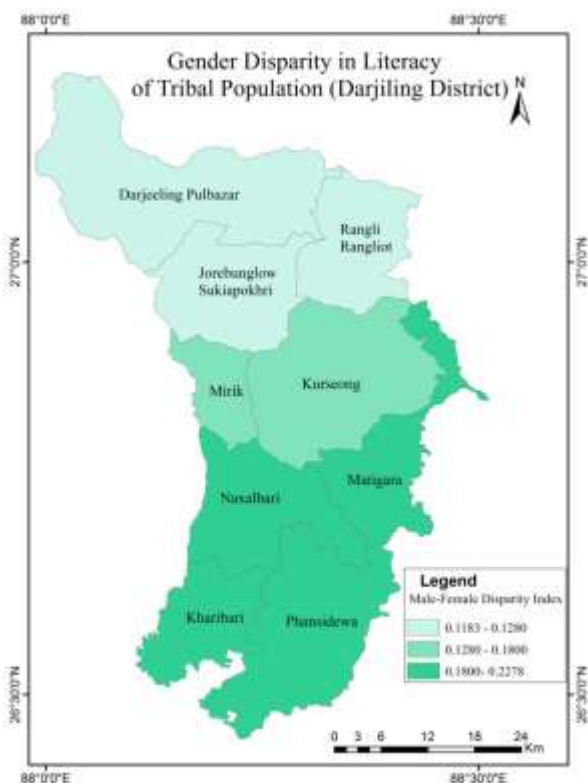


Fig.5 Gender Disparity Index

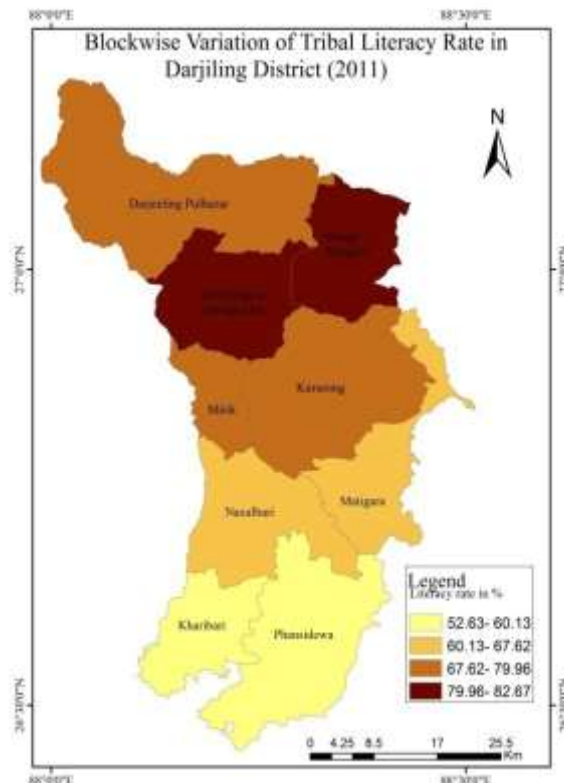


Fig.6 Tribal literacy Rate

Table 5. Educational level of Different age group of people in Darjiling District (2011)

Age Group	Literate without educational level	Below primary	Primary	Middle	Secondary	HS/Pre-University/Secondary	Technical/non technical diploma	Graduate & above
7-14	0.64	53.06	36.21	9.98				
15-19	1.16	11.58	23.78	34.60	20.35	8.40	0.07	
20-24	2.00	14.26	21.14	22.93	11.58	20.21	0.34	7.44
25-29	3.18	15.91	21.59	24.93	9.04	12.58	0.22	12.41
30-34	3.34	16.63	21.44	26.65	9.28	12.31	0.19	10.08
35-39	3.28	19.75	21.68	24.99	8.85	12.20	0.11	9.05
40-44	3.47	22.41	21.49	22.23	8.09	11.24	0.17	10.76
45-49	3.72	24.77	21.57	22.70	7.86	9.14	0.17	9.89
50-54	3.79	27.69	20.99	21.48	8.22	9.79	0.14	7.80
55-59	4.01	28.04	19.74	20.33	9.38	10.85	0.25	7.29
above60	5.65	32.60	22.32	17.56	8.25	7.90	0.19	5.39

Source: Census of India

Table 5. is showing different educational level of different age group of people. It is important to note that higher education percentage is significantly low for the tribal population. Among the higher age people the literacy level is mostly between below primary, primary and middle. 32.60% population in the age group of above 60 is below primary level. Education level i.e. graduation and above is little high among the age group between 25-29 and 30-34 that is 12.41% and 10.08%. age group above 60 has only 5.39% of graduate population.

Table. 6 Work participation rates of different Blocks 2011

BLOCK NAME	Work participation Rate			Main worker			Marginal worker			Non Worker		
	TOTAL	M	F	Total	M	F	Total	M	F	Total	M	F
Darjeeling Pulbazar	42.99	25.91	17.08	25.75	16.54	9.21	17.24	9.37	7.87	57.01	24.57	32.44
Rangli Rangliot	38.74	23.55	15.19	23.70	14.61	9.09	15.04	8.94	6.10	61.26	26.14	35.12
Jorebunglow Sukiapokhri	34.70	21.80	12.90	27.83	17.43	10.40	6.87	4.37	2.50	65.30	27.18	38.13
Mirik	39.74	23.79	15.95	26.92	15.76	11.16	12.82	8.03	4.79	60.26	26.56	33.70
Kurseong	37.81	23.25	14.56	27.63	17.00	10.64	10.17	6.26	3.92	62.19	26.73	35.46
Matigara	40.21	24.62	15.59	34.38	21.35	13.03	5.82	3.27	2.55	59.79	24.25	35.55
Naxalbari	42.13	25.17	16.96	31.29	20.36	10.93	10.84	4.81	6.03	57.87	24.19	33.67
Phansidewa	44.08	24.08	20.00	30.47	17.79	12.68	13.61	6.29	7.32	55.92	25.03	30.88
Kharibari	45.30	26.62	18.68	31.91	21.47	10.44	13.39	5.15	8.24	54.70	23.30	31.40

Source: Census of India

There is a block wise variation in work participation rate of tribal population. Highest WPR is found in Kharibari block(45.30%) followed by Phansidewa (44.08%), Naxalbari (42.13%) and Matigara(40.21%). Whereas lowest WPR is found in Jorebunglow-sukiapokhri (34.70%). It is interesting to note that WPR is quite high in the plain area among At population. There is also gap between male-female WPR. Female WPR is low in most of the blocks. Lowest female WPR is found in Jorebunglow-sukiapokhri (12.90%) and highest female WPR is found in Phansidewa block. The scenario is different in case of main worker and marginal worker. In most of the blocks marginal female WPR is low but in Kharibari, Phansidewa & Naxalbari marginal female WPR is higher than the male marginal workers. Marginal male WPR is 4.81%, 6.29%, 5.15% in Naxalbari, Phansidewa and Kharibari respectively. Female marginal WPR is 6.03%, 7.32% and 8.24%. Table 7 the different working categories in different blocks. The highest cultivator is found in Darjeeling-pulbazar i.e. 40.27% followed by Mirik (17.87%), and Kharibari (12.69%). Highest agricultural labour is found in Kharibari (26.95%). The percentage of household industry worker is very low. Percentage of other working category is quite high. The majority of tribal population is mostly concentrated on tea plantation area and worked in tea garden.

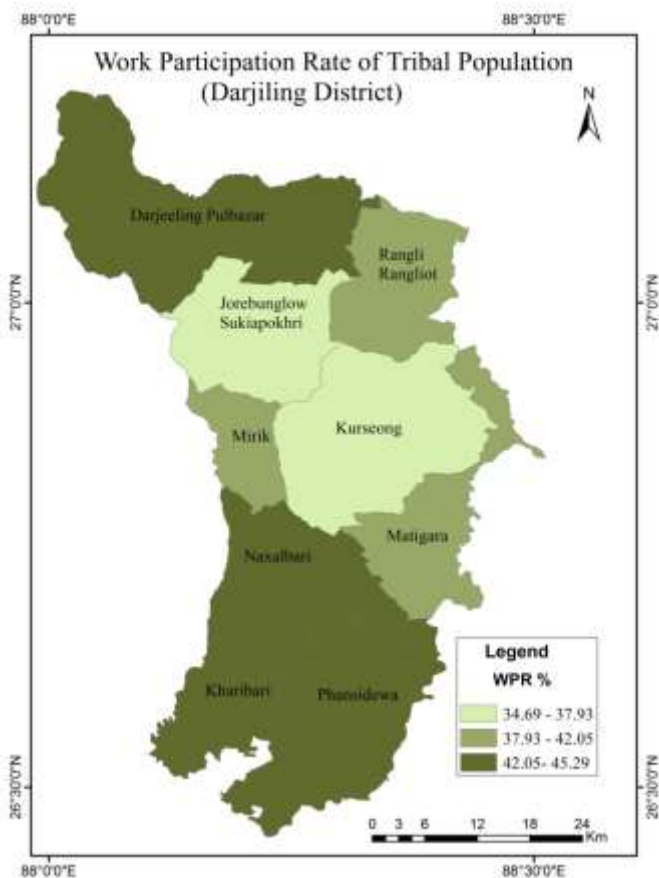


Fig 7. Work participation rate

Table. 7 Block-wise variations in working category

BLOCK NAME	Cultivator			Agricultural Labour			Household Industry			Other Worker		
	Total	M	F	Total	M	F	Total	M	F	Total	M	F
Darjeeling Pulbazar	40.27	24.35	15.92	11.97	6.79	5.18	3.04	1.56	1.48	44.72	27.57	17.15
Rangli Rangliot	11.43	6.99	4.44	22.13	12.78	9.35	1.41	0.9	0.51	65.02	40.11	24.91
Jorebunglow Sukiapokhri	8.56	5.47	3.09	6.54	3.95	2.59	1.99	1.34	0.65	82.92	52.08	30.84
Mirik	17.87	12.6	5.27	14.71	8.65	6.06	1.44	0.95	0.49	65.97	37.66	28.32
Kurseong	9.88	6.75	3.13	5.4	3.66	1.74	2.21	1.39	0.81	82.51	49.69	32.82
Matigara	4.45	3.46	1.00	1.86	1	0.85	1.62	0.95	0.68	92.06	55.82	36.24
Naxalbari	5.79	4.58	1.21	8.46	5.18	3.28	1.67	0.92	0.75	84.08	49.06	35.02
Phansidewa	4.42	3.61	0.81	9.41	5.73	3.68	1.18	0.61	0.57	84.99	44.68	40.31
Kharibari	12.69	10.58	2.11	26.95	14.85	12.11	1.25	0.66	0.58	59.11	32.68	26.44

Source: Census of India

After examining the spatial pattern of education and occupational structure it is important to study the education in relation with occupation in the study area. The spatial distribution of literacy and employment comprising two set of variable (literacy-total, male, female), as well as occupational structure (WPR, cultivator, agricultural labour, Household industry worker, other worker).

Table.8 Composite score of literacy & occupational structure in Darjiling District.

Name of the Blocks	composite z-score of literacy	Composite z-score of Occupational Structure
Darjeeling Pulbazar	0.7925	1.2096
Rangli Rangliot	0.8514	-0.2707
Jorebunglow Sukiapokhri	1.0399	-0.2212
Mirik	0.7305	-0.7807
Kurseong	0.6051	-0.2710
Matigara	-0.5486	-0.5856
Naxalbari	-0.7672	-0.0869
Phansidewa	-1.1125	1.0998
Kharibari	-1.5911	-0.0932

Source: Calculated from census of India

Table 8 shows that only one block which is Darjeeling pulbazar having high score of literacy and employment. From the plain only Matigara has low score of literacy and employment. But among the other blocks specially on the hilly part it is interesting to note that though the score in literacy is quite high but the score of occupational structure is low. The value of composite score is positive in RangliRagliot, Jorebunglow-sukiapokhri, Mirik and Kurseong but the score of occupational structure is in negative value in this blocks.

Fig 8.

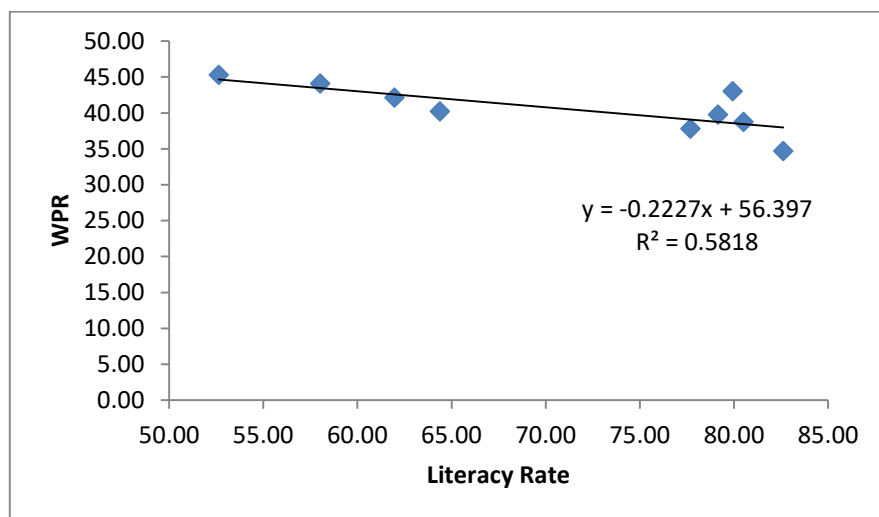


Fig.6 is showing the relation between literacy rate and WPR by scatter plot and trend line. The trend is showing a negative relationship between WPR and literacy. From the equation it can be said that the relation between literacy (x) and WPR (y) is such that an increase in literacy rate can cause a decrease of 2% in WPR.

Table.9 correlation (r) Matrix of the variable of Literacy and occupational groups.

	X1	X2	X3	X4	X5	X6	X7	X8
X1	1							
X2	0.999249	1						
X3	0.999353	0.997333	1					
X4	-0.76275*	-0.77149*	-0.76142*	1				
X5	0.044186	0.026053	0.04887	0.548079	1			
X6	-0.17673	-0.18798	-0.17559	0.410644	0.645554	1		
X7	0.557823	0.551026	0.558935	-0.1998	0.155532	-0.3441	1	
X8	-0.23445	-0.21808	-0.23615	-0.35266	-0.81549*	-.68133*	-.38725	1

\*significant at  $t=.050$

The casual relationship between literacy and occupational structure has also been examined with the linear relationship. The result of association between the variable of literacy and occupational group has been shown in table 9. Here X1 is showing total literacy rate X2 is male literacy rate and X3 is Female literacy rate and X4,X5,X6, X7,X8 is showing work participation rate, cultivator, Agricultural labour, Household industry worker and other worker respectively. It reveals that there is negative correlation of literacy (X1) and WPR (X4). There is positive relationship between literacy (X1) and household industry worker (X7). The analysis suggests that there is negative relation between literacy and WPR. The data is showing this result because in the hilly region the literacy rate is quite high among the St population but the WPR is low. where as in the plain region the literacy rate is low but WPR is high. Actually in both the region there is difference in St Community. In case of plain region it is notable that the St Community is revolving mainly around the tea garden area where the consciousness about education among the St's is very disappointing. As the consciousness about education is very low it is obvious that the young age people as well as their parents are keen to go to work from the very early age instead of getting their education definitely for income. But in the hilly region the consciousness about education is high among St than the plain area.

## Conclusion

Tribal people are the most under privileged section of the society. In terms of socio-economy, they are far behind from the other communities of our society and their cultural essence is also different from others. The study shows there is variation in literacy rate and work participation rate among the different blocks of Darjiling district. Literacy rate among St's of plain region which includes four blocks of the district is very poor. The relationship between education and employment shows a very different picture. A higher level of literacy and low level of employment has been observed in the hilly blocks. But a very low level of literacy and high level on employment rate has found in the southern part of the district. Gender gap in literacy and work participation rate is also prominent in different blocks of the district. The scenario of tribal literacy in Darjeeling District from the preceding study reveals that the literacy level has undergone considerable positive transformation. But the existing situation of tribal development across different areas shows that the rural sides of the plain area are still lagging behind.

## References

- Census of India (2011). West Bengal, series-20, Part XII-B, District Census Hand Book, Darjeeling, village and town wise primary census abstract(PCA), Directorate of census operations West Bengal
- Chandana, R.c. (1994). *A Geography of Population*, Kalyani Publishers, pp.228.
- Das, M. Sharma, H. (2011). 'Literacy Patterns Among Tribal Woman In Assam', Geographical Review of India, vol.73, pp.125-133
- District statistical Hand Book (1981). Darjeeling, Bureau of Applied Economics and statistics, Government of West Bengal
- District statistical Hand Book (1973-1974). Darjeeling, Bureau of Applied Economics and statistics, Government of West Bengal
- Dr. Rao, D.B. (2004). *Education For Dalit*', Discovery Publishing House, New Delhi.
- Dr..Seshagiri. N. (2013). *Survey Of Rural India, A Comprehensive Study Of Gram Panchyat And Community Development Block*, vol.25, West Bengal
- Dr. Singh, R.(2009). 'Rural Education in India', Adhyayan Publishers & Distributors, New Delhi.
- Dutta, M, (2012). 'Status Of Literacy In Purba Medinipur District, West Bengal, An Overview', Geographical Review of India, vol.74 (2), pp.140-149
- Hannan, A. (2013). 'Dimensions of Literacy and Occupational Structure in Eastern Uttar Pradesh, India', Geographical Review of India vol.75 (2), pp.125-138.
- Hussain, M. (2013). *Geography of India*, Forth Edition, McGraw Hill Education (India) Private Limited, New Delhi.pp.13.60-13.61
- Khan, J.H., Menka, Shamshad (2014). 'Spatial Perspective of Literacy, Employment and Levels of Development among the Urban Beggars in Aligarh District', National Geographical Journal of India, vol.60 (2), pp.113-126.
- Khullar (1999). *India A Comprehensive Geography*, Kalyani Publishers, pp.217.
- Lyndem, B. & DE, U. (2001). 'Education in North East India', Concept Publishing Company, New Delhi
- Yadav,S. (2009). 'Regional Inequalities in the Levels of Literacy and Its Determinants in Uttar Pradeh', Geographical Review of India, vol.71(1), pp.85-90